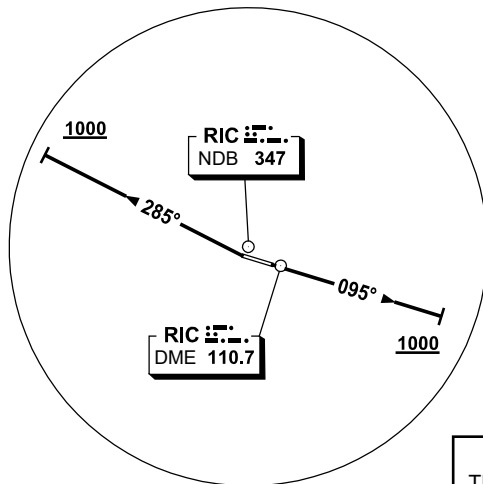


**STANDARD INSTRUMENT DEPARTURES (SID)
RICHMOND FOUR DEPARTURE (RADAR)
RICHMOND, NSW (YSRI)**

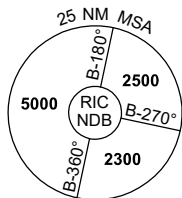
13 JUN 2024

ATIS/AWIS (AH) 126.3 274.55	SMC 128.25	TWR 135.5 257.3	APP 135.9 363.8	FIA (AH) SY CEN 124.55	CTAF+AFRU (AH) 135.5	AFRU+PAL 135.5	Bearings are Magnetic Elevations in FEET AMSL
--------------------------------	---------------	--------------------	--------------------	---------------------------	-------------------------	-------------------	--

NOT TO SCALE



**CAUTION:
TREES IN RWY 10
DEP AREA**



10 NM MSA 3300

RICHMOND FOUR DEPARTURE (RADAR)

RWY 10

- Grad 3.3%
- Track 095°
- At 1000ft and not before DER turn to assigned heading or track

RWY 28

- GRAD 4.9% to 2600ft, thence 3.3%
- At DER turn right track 285°
- At 1000ft and not before DER turn to assigned heading

COMMUNICATION FAILURE PROCEDURE

On recognition of communication failure:

- Squawk 7600
- Maintain last assigned vector for two minutes, and
- CLIMB IF NECESSARY TO MINIMUM SAFE ALTITUDE, to maintain terrain clearance, then
- proceed in accordance with the latest ATC route clearance acknowledged.