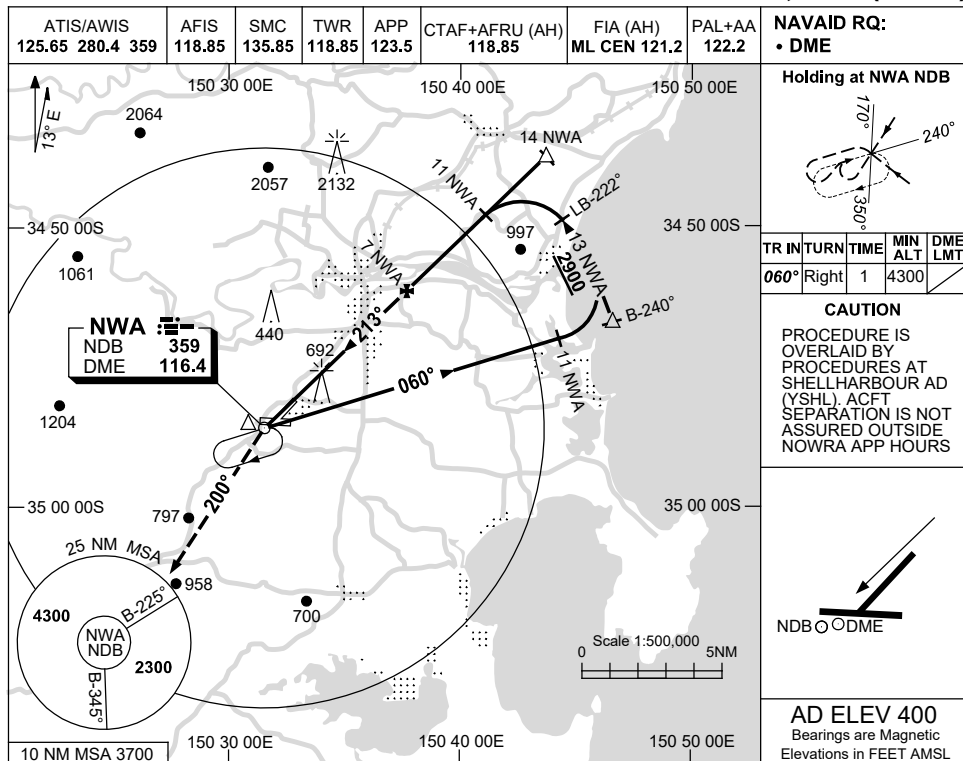


USE QNH

NDB RWY 21

**NOWRA, NSW (YSNW)**

21 MAR 2024



**NAVAID RQ:**  
• DME

Holding at NWA NDB

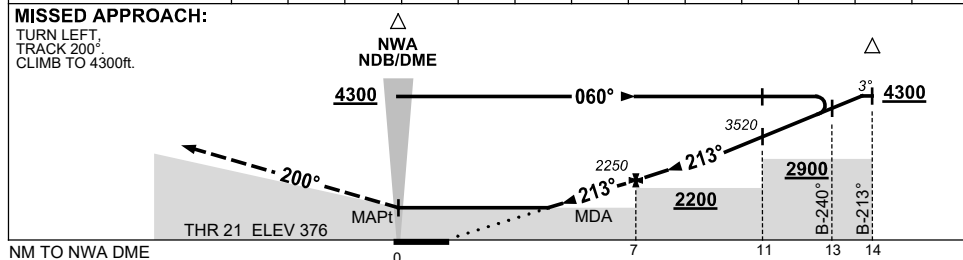
TR	IN	TURN	TIME	MIN ALT	DME LMT
060°	Right	1	4300		

**CAUTION**  
PROCEDURE IS OVERLAID BY PROCEDURES AT SHELL HARBOUR AD (YSHL). ACFT SEPARATION IS NOT ASSURED OUTSIDE NOWRA APP HOURS

NDB DME

**AD ELEV 400**  
Bearings are Magnetic  
Elevations in FEET AMSL

NM TO NWA DME	3.3	4	5	6	7	8	9	10	11	12	13	13.4	
ALT (3° APCH PATH)	1060	1300	1610	1930	2250	2570	2890	3210	3520	3840	4160	4300	



**NOTES**

CATEGORY	A	B	C	D
S-I NDB/DME	1060 (684-3.2)			NOT APPLICABLE
CIRCLING	1320 (920-2.4)	1680 (1280-4.0)		
ALTERNATE	(1420-4.4)		(1780-6.0)	

Changes: MINIMA, VIS, DIST ALT TABLE.

SNWNB01-178