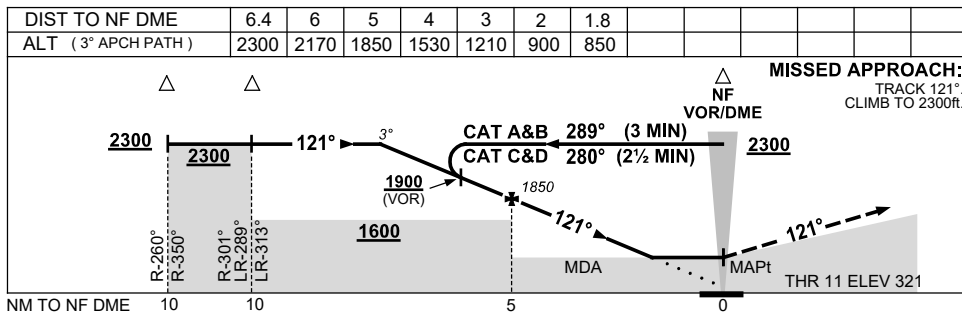
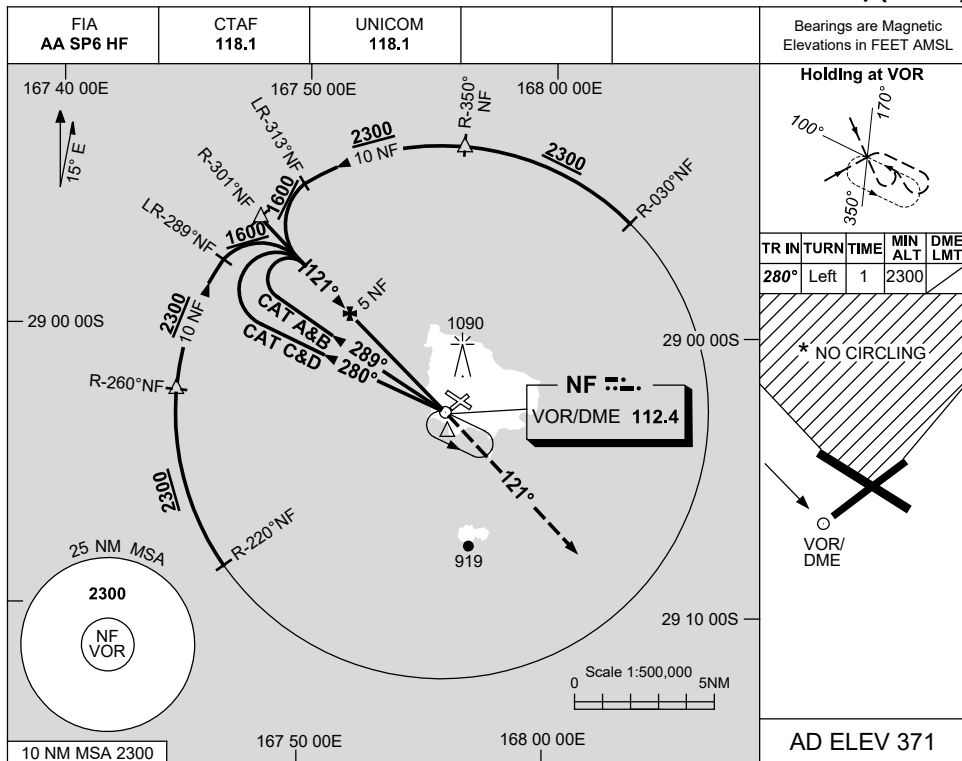


USE QNH

VOR RWY 11
NORFOLK ISLAND, (YSNF)

28 NOV 2024



NOTES

CATEGORY	A	B	C	D
S-I VOR/DME		880 (559-3.2)		
S-I VOR		930 (609-3.5)		
CIRCLING *	1100 (729-2.4)		1160 (789-4.0)	1480 (1109-5.0)
ALTERNATE	(1229-4.4)		(1289-6.0)	(1609-7.0)

1. MAX IAS:
INITIAL : 230KT.
- *2. NO CIRCLING IN SECTOR N OF RWYS 04/22 & 11/29.
3. AWIS (PHONE)
02 9353 6443

Changes: MNM ALT.

SNFVO02-181