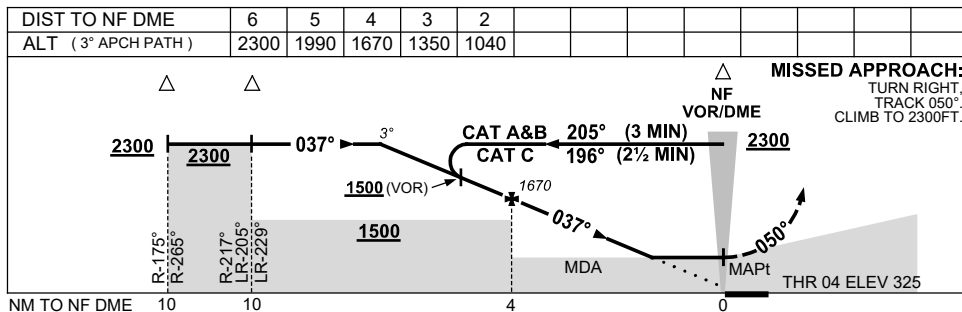
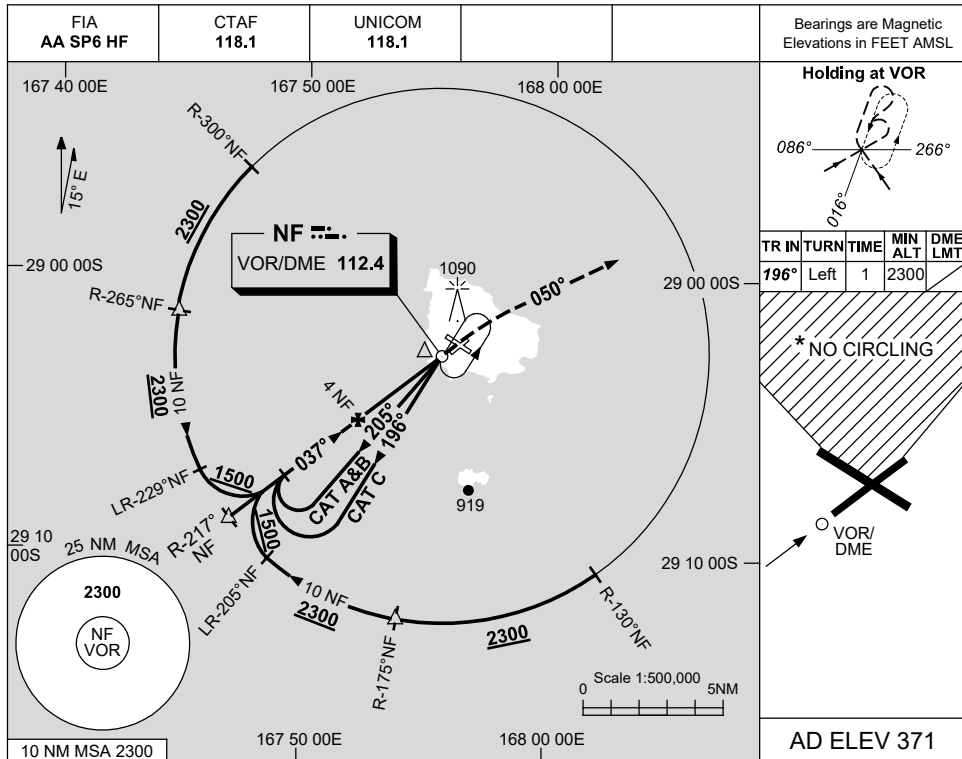


USE QNH

VOR RWY 04
NORFOLK ISLAND, (YSNF)

15 JUN 2023



NOTES

CATEGORY	A	B	C	D
S-I VOR or VOR/DME	1100 (775-4.4)			NOT AUTHORISED
CIRCLING*	1100 (729-2.4)		1160 (789-4.0)	
ALTERNATE	(1229-4.4)		(1289-6.0)	

1. MAX IAS:
 INITIAL : 230KT.
 MAP TURN: 160KT.
- * 2. NO CIRCLING IN
 SECTOR N OF
 RWYS 04/22 & 11/29.
3. AWIS (PHONE)
 02 9353 6443

Changes: TWR ELEVATION.

SNFV001-175