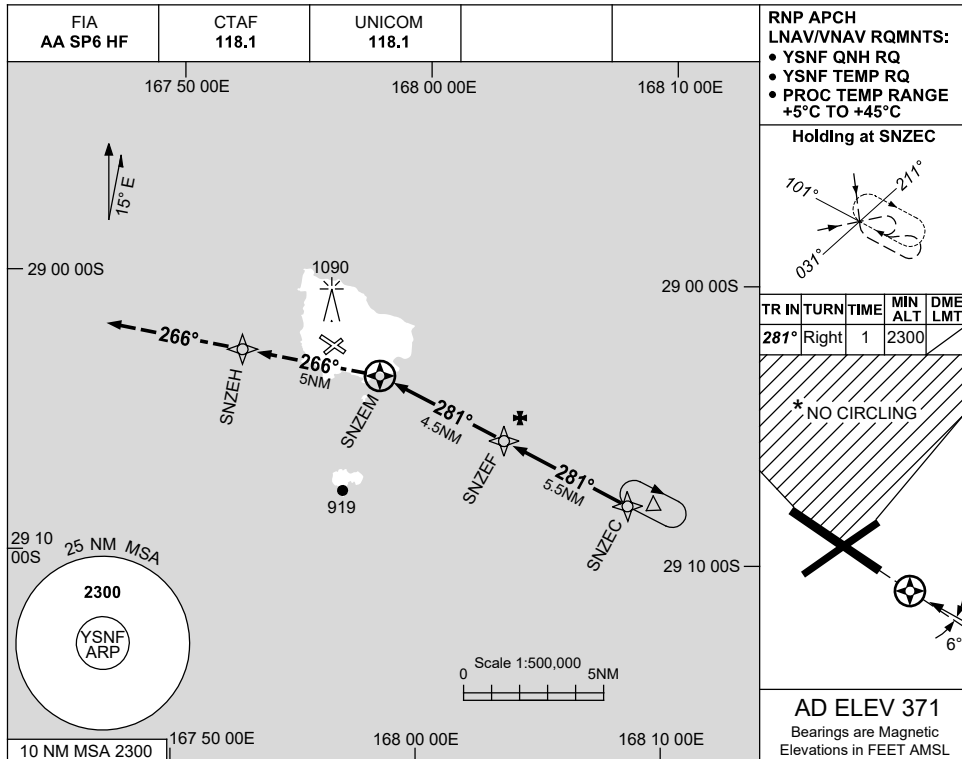


USE QNH

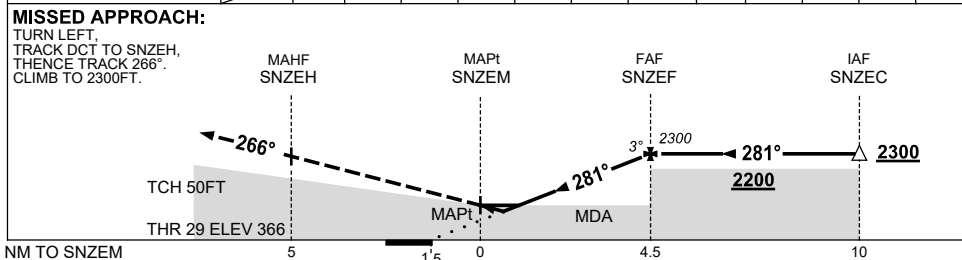
RNP Y RWY 29

15 JUN 2023

NORFOLK ISLAND, (YSNF)



NM TO NEXT WPT	SNZEM	0.3	0.6	1	2	3	4	SNZEF				
ALT (3° APCH PATH)		990	1070	1210	1530	1850	2170	2300				



CATEGORY	A	B	C	D
LNAV/VNAV	<b>990</b> (624-3.5)			
LNAV	<b>1070</b> (699-4.0)			
CIRCLING	<b>1100</b> (729-2.4)	<b>1160</b> (789-4.0)	<b>1480</b> (1109-5.0)	
ALTERNATE	(1229-4.4)	(1289-6.0)	(1609-7.0)	

- NOTES**
- MAX IAS:  
INITIAL : 210KT  
MAP TURN: 200KT
  - \* NO CIRCLING IN SECTOR N OF RWYS 04/22 & 11/29.
  - AWIS (PHONE)  
02 9353 6443

Changes: TWR ELEVATION.

SNFGN05-175