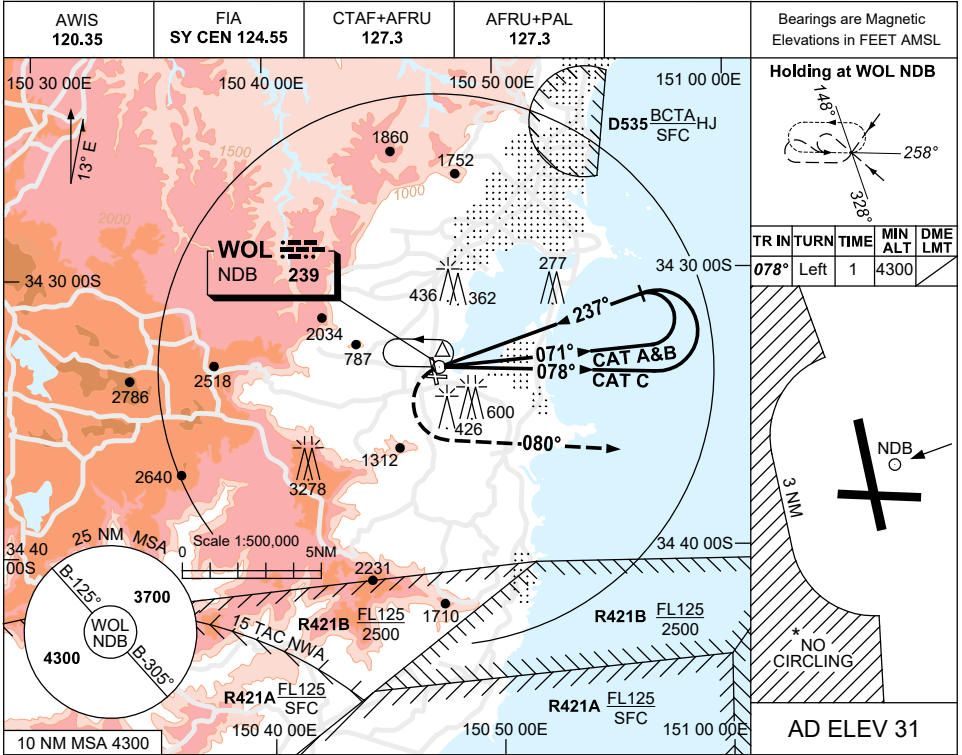
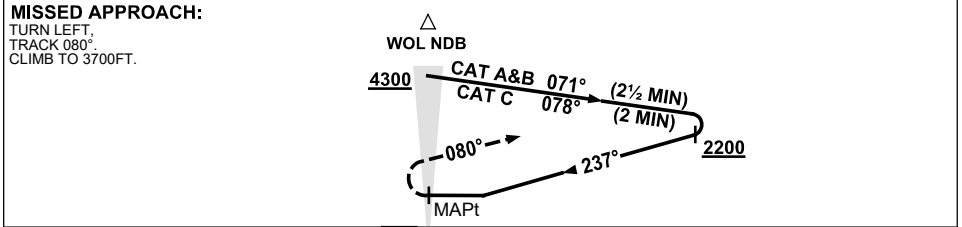


USE QNH
SHELLHARBOUR AIRPORT, NSW (YSHL) NDB-A

8 SEP 2022



DME DIST					
ALT	NOT APPLICABLE				



NOTES

1. MAX IAS :
HOLDING: 180KT.
INITIAL :
CAT A&B : 140KT.
CAT C : 180KT.
MAP TURN: 180KT.
- * 2. NO CIRCLING WEST OF RWY 16/34 BEYOND 3NM.
3. COLOUR: SEE SPEC NOTICES.

CATEGORY	A	B	C	D
				NOT APPLICABLE
CIRCLING *	1840 (1809-2.4)		1940 (1909-4.0)	
ALTERNATE	(2309-4.4)		(2409-6.0)	

Changes: Editorial.

SHLN01-172