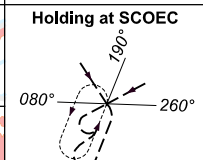
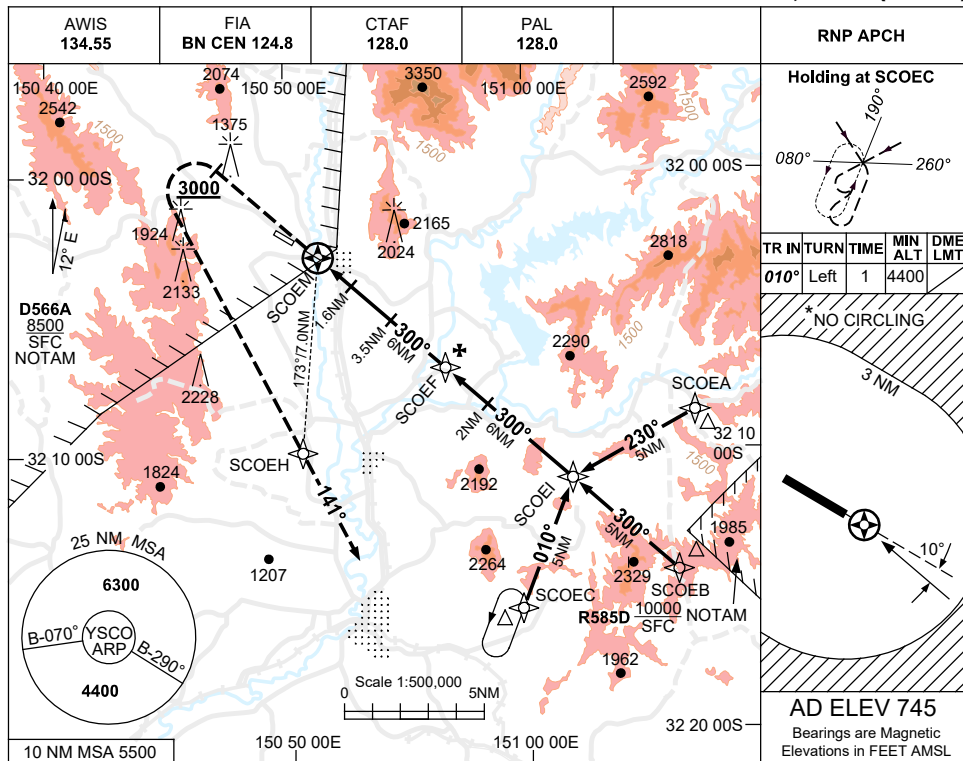


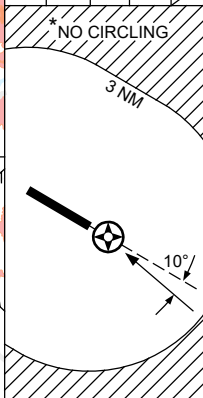
USE QNH

RNP RWY 29
SCONE, NSW (YSCO)

28 NOV 2024

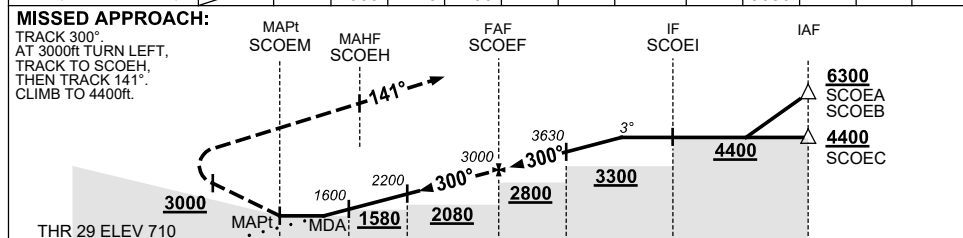


TR	IN	TURN	TIME	MIN ALT	DME LMT
010°	Left	1	4400		



AD ELEV 745
Bearings are Magnetic
Elevations in FEET AMSL

NM TO NEXT WPT	SCOEM	1.5	1.6	2	3.5	4	5	SCOEF	1	2	3	4.4
ALT (3° APCH PATH)		1580	1600	1720	2200	2360	2680	3000	3320	3630	3950	4400



- NOTES**
- MAX IAS:
INITIAL : 210KT.
MISSED APCH
TURN : 200KT.
 - *2. NO CIRCLING
BEYOND 3NM.
 3. CLR MAY BE RQ
WHEN R585D ACT.
(WLM APP 135.7)
 4. COLOUR: SEE
SPEC NOTICES.

CATEGORY	A	B	C	D
LNAV		1580 (870-5.0)		NOT APPLICABLE
CIRCLING *	2040 (1295-2.4)		2530(1785-4.0)	
ALTERNATE	(1795-4.4)		(2285-6.0)	

Changes: R585D REPLACES R584D, Editorial.

SCOGN01-181