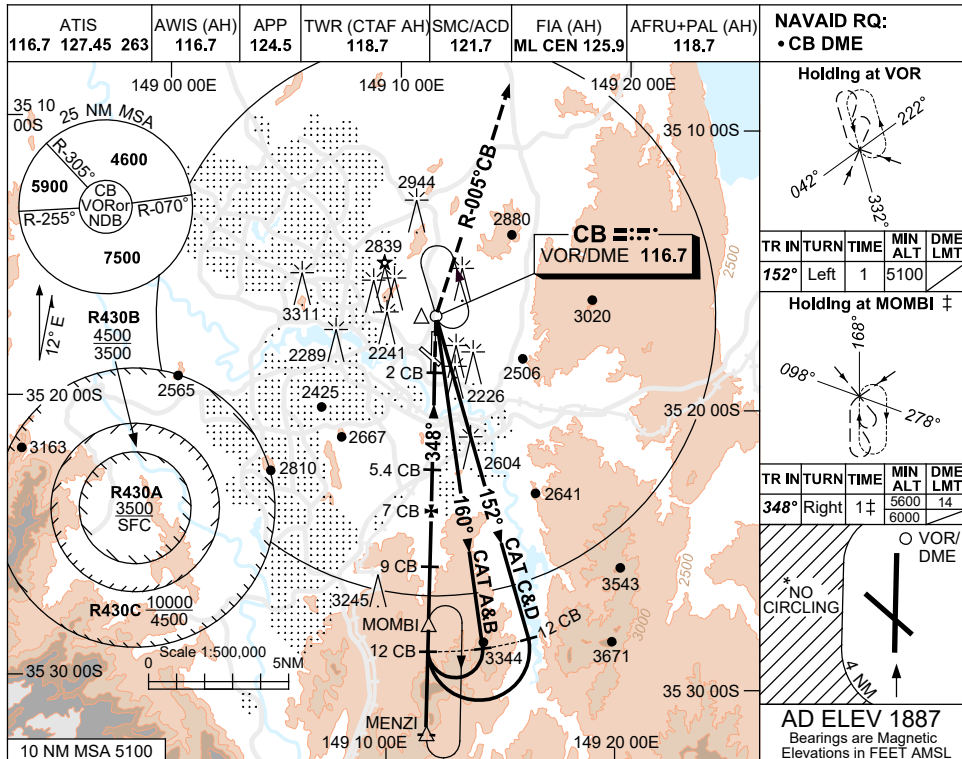


USE QNH

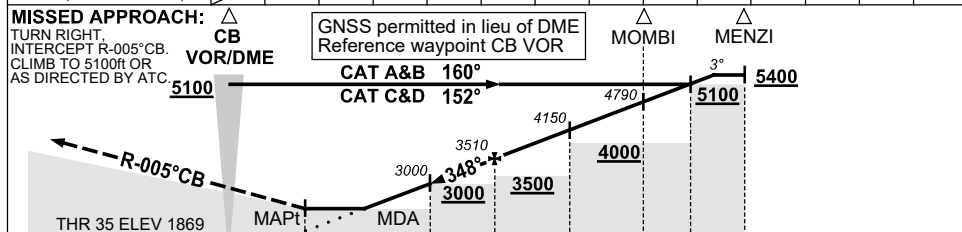
VOR RWY 35

5 SEP 2024

CANBERRA, ACT (YSCB)



DIST TO CB DME	MAPt	5	5.4	6	7	8	9	10	11	12	12.9		
ALT (3° APCH PATH)		2880	3000	3190	3510	3830	4150	4470	4790	5100	5400		



NM TO CB DME	0	2	5.4	7	9	11	12	14.9
NM TO THR 35	0	0	3.4	5	7	9	10	12.9

NOTES

- ‡1. MAX IAS:
HLDG AT MOMBII
5600ft : 170KT.
6000ft : 210KT.
MISSED APCH
TURN : 230KT.
- *2. NO CIRCLING
BEYOND 4NM WEST OF
RWY 17 / 35.
- 3. ACFT MAY BE RADAR
VECTORED TO IAF.
- 4. COLOUR: SEE
SPEC NOTICES.

CATEGORY	A	B	C	D
S-I VOR/DME	2880 (1011-4.9)			
CIRCLING *	3350 (1463-2.4)	3580 (1693-4.0)	3720 (1833-5.0)	
ALTERNATE	(1963-4.4)	(2193-6.0)	(2333-7.0)	

Changes: AD ELEV, Editorial.

SCBVO02-180