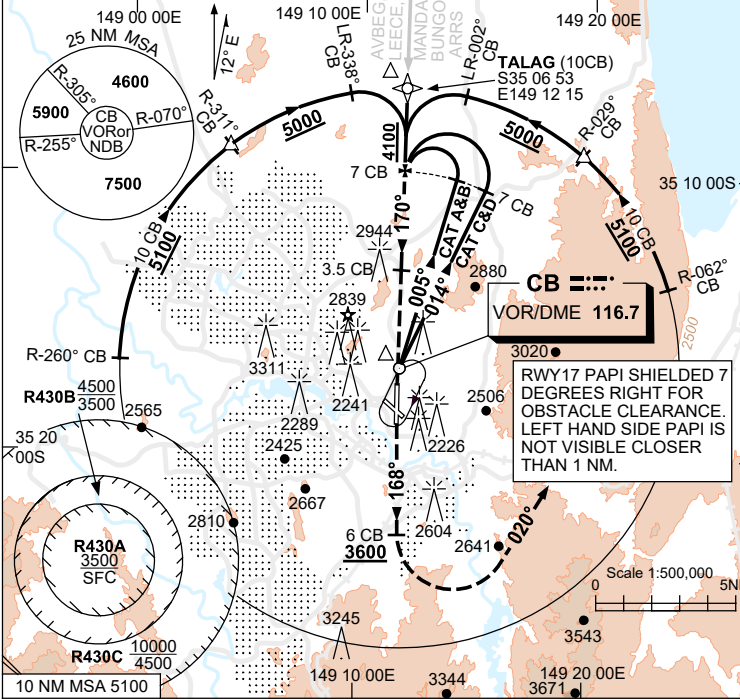


USE QNH

VOR RWY 17
CANBERRA, ACT (YSCB)

5 SEP 2024

ATIS 116.7 127.45 263	AWIS (AH) 116.7	APP 124.5	TWR 118.7	SMC/ACD 121.7	FIA (AH) ML CEN 125.9	CTAF+AFRU (AH) AFRU+PAL (AH) 118.7	NAVAID RQ: •CB DME
--------------------------	--------------------	--------------	--------------	------------------	--------------------------	--	-----------------------



Holding at VOR

TR	IN	TURN	TIME	MIN ALT	DME LMT
014°	Right		1	5100	

* NO CIRCLING

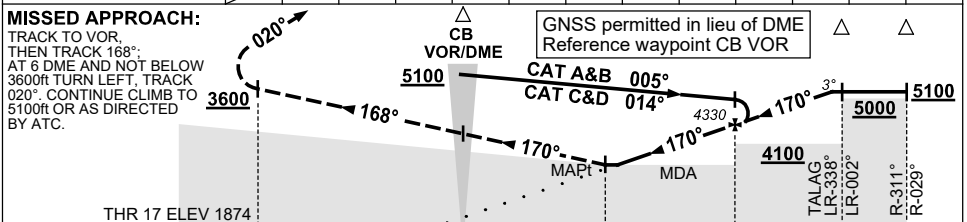
VOR/DME

AD ELEV 1887
 Bearings are Magnetic
 Elevations in FEET AMSL

CB **VOR/DME 116.7**

RWY17 PAPI SHIELDED 7 DEGREES RIGHT FOR OBSTACLE CLEARANCE. LEFT HAND SIDE PAPI IS NOT VISIBLE CLOSER THAN 1 NM.

DIST TO CB DME	MAPt	3.9	4	5	6	6.3	7	8	9	9.4		
ALT (3° APCH PATH)		3350	3370	3690	4010	4100	4330	4650	4970	5100		



NM TO CB DME	6	0	3.5	7	10	10.56
NM TO THR 17			4.06	7.56		

NOTES

- MAX IAS: INITIAL : 210KT.
- NO CIRCLING BEYOND 4NM WEST OF RWY 17 / 35.
- ACFT MAY BE RADAR VECTORED TO IAF.
- COLOUR: SEE SPEC NOTICES.

CATEGORY	A	B	C	D
S-I VOR/DME	3350 (1476-5.0)			
CIRCLING *	NOT AUTHORISED	3580 (1693-4.0)	3720 (1833-5.0)	
ALTERNATE	(2193-6.0)		(2333-7.0)	

Changes: AD ELEV, Editorial.

SCBVO01-180