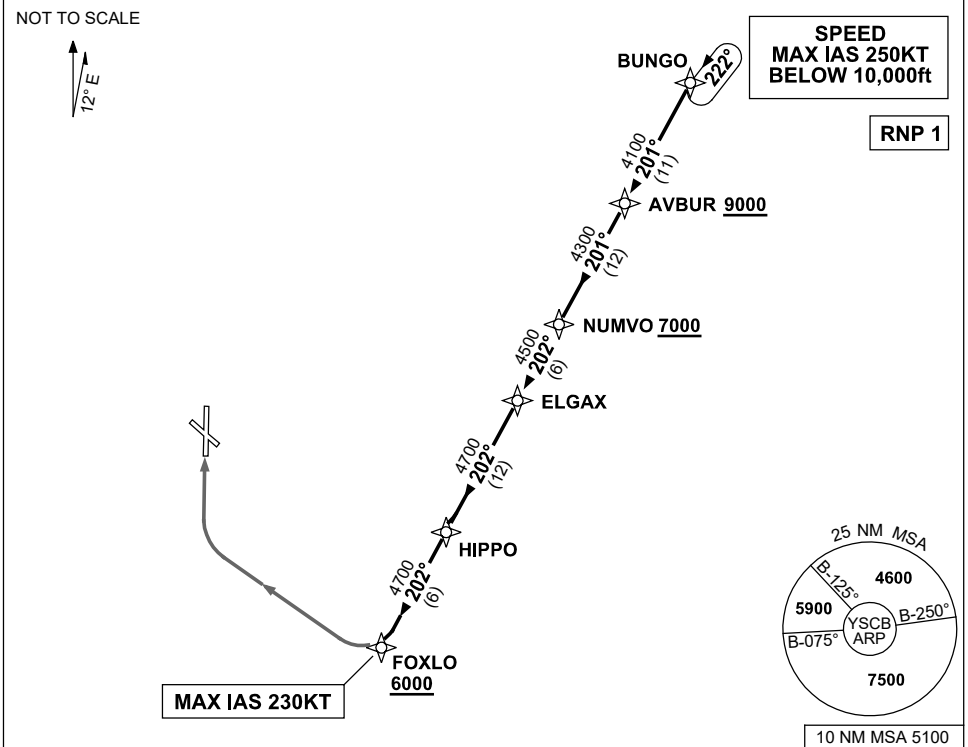


**STANDARD ARRIVAL ROUTE (STAR)
BUNGO FIVE WHISKEY ARRIVAL (NON-JET) (RNAV)
CANBERRA, ACT (YSCB)**

7 SEP 2023

| | | | | | | | |
|--------------------------|--------------------|--------------|--------------|------------------|--------------------------|--|--|
| ATIS 116.7 127.45 263 | AWIS (AH) 116.7 | APP 124.5 | TWR 118.7 | SMC/ACD 121.7 | FIA (AH) ML CEN 125.9 | CTAF+AFRU (AH) AFRU+PAL (AH) 118.7 | Bearings are Magnetic Elevations in FEET AMSL |
|--------------------------|--------------------|--------------|--------------|------------------|--------------------------|--|--|



**ARRIVAL: BUNGO FIVE WHISKEY
RWY 35:**

- From BUNGO track 201° to AVBUR
Cross AVBUR AT or ABV 9000ft
- Track 201° to NUMVO
Cross NUMVO AT or ABV 7000ft
- Turn RIGHT, track 202° to ELGAX
- Track 202° to HIPPO
- Track 202° to FOXLO
Cross FOXLO AT or ABV 6000ft
MAX IAS 230KT from FOXLO
- Track via RNP W RWY 35 (AR) approach

COMMUNICATIONS FAILURE: PROCEDURE IN IMC

- Squawk 7600, comply with vertical navigation requirements, but not below MSA.
- Track via the latest STAR clearance to the nominated runway, then fly the most suitable approach in accordance with ERS A EMERG Section 1.5.

Changes: REVISED PROC.

SCBSR15-1176