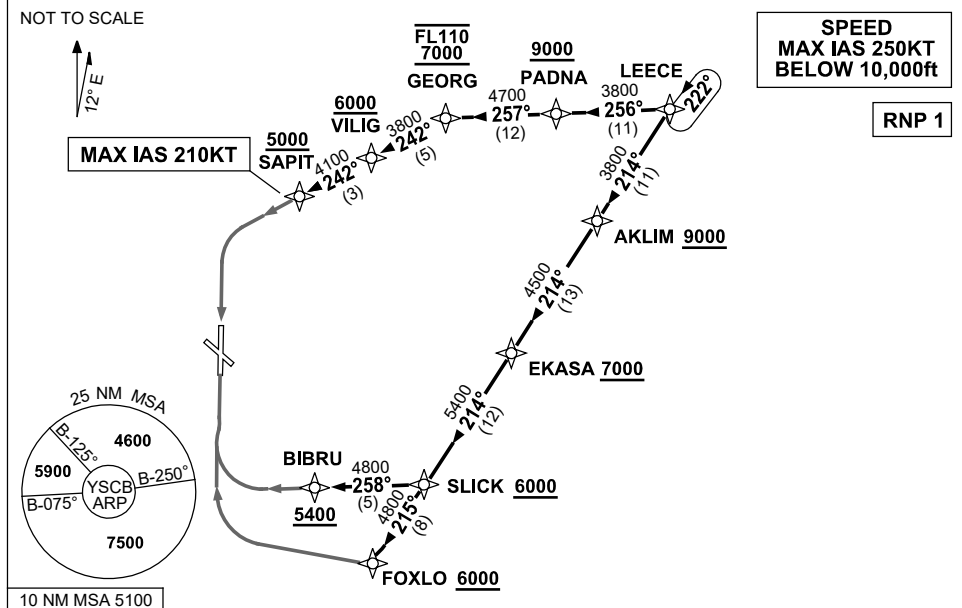


**STANDARD ARRIVAL ROUTE (STAR)
LEECE ONE WHISKEY, YANKEE ARRIVALS (JET) (RNAV)
CANBERRA, ACT (YSCB)**

13 JUN 2024

ATIS 116.7 127.45 263	AWIS (AH) 116.7	APP 124.5	TWR 118.7	SMC/ACD 121.7	FIA (AH) ML CEN 125.9	CTAF+AFRU (AH) AFRU+PAL (AH) 118.7	Bearings are Magnetic Elevations in FEET AMSL
--------------------------	--------------------	--------------	--------------	------------------	--------------------------	--	--



ARRIVAL: LEECE ONE

RWY 17 YANKEE:

- From LEECE track 256° to PADNA
Cross PADNA AT or ABV 9000ft
- Turn RIGHT, track 257° to GEORG
Cross GEORG BTN 7000ft and FL110
- Turn LEFT, track 242° to VILIG
Cross VILIG AT or ABV 6000ft
- Track 242° to SAPIT
Cross SAPIT AT or ABV 5000ft
MAX IAS 210KT from SAPIT
- Track via RNP Y RWY 17 (AR) approach

RWY 35 YANKEE:

- From LEECE track 214° to AKLIM
Cross AKLIM AT or ABV 9000ft
- Track 214° to EKASA
Cross EKASA AT or ABV 7000ft
- Track 214° to SLICK
Cross SLICK AT or ABV 6000ft
- Turn RIGHT track 258° to BIBRU
Cross BIBRU AT or ABV 5400ft
- Track via RNP Y RWY 35 (AR)

RWY 35 WHISKEY:

- From LEECE track 214° to AKLIM
Cross AKLIM AT or ABV 9000ft
- Track 214° to EKASA
Cross EKASA AT or ABV 7000ft
- Track 214° to SLICK
Cross SLICK AT or ABV 6000ft
- Turn RIGHT, track 215° to FOXLO
Cross FOXLO AT or ABV 6000ft
- Track via RNP W RWY 35 (AR) approach

COMMUNICATIONS FAILURE: PROCEDURE IN IMC

- Squawk 7600, comply with vertical navigation requirements, but not below MSA.
- Track via the latest STAR clearance to the nominated runway, then fly the most suitable approach in accordance with ERSA EMERG Section 1.5.

Changes: WPT RAZZI RENAMED LEECE, PROC NAME, VALIDITY INDICATOR.

SCBSR13-179