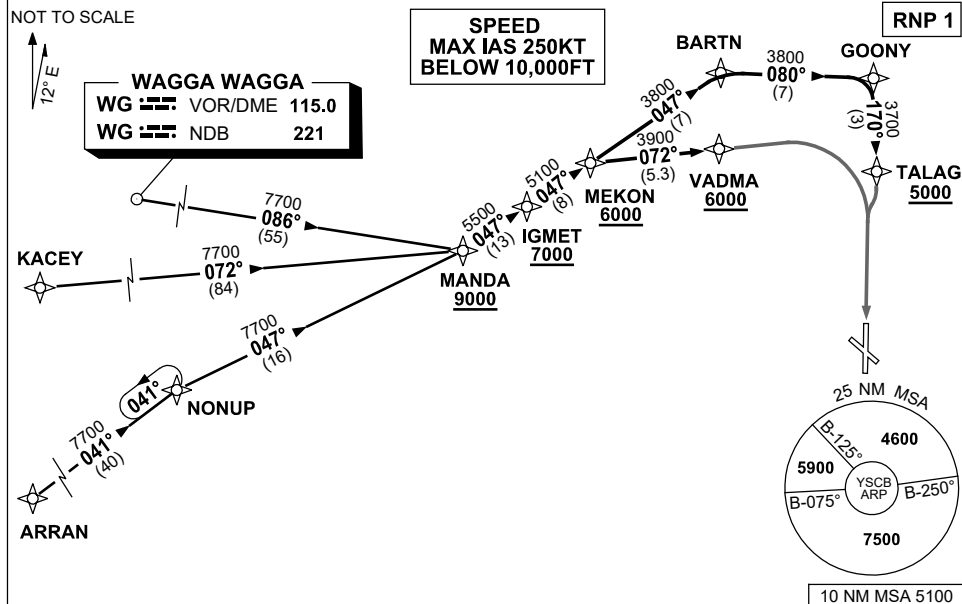


**STANDARD ARRIVAL ROUTE (STAR)
MANDA THREE ALPHA, X-RAY, ARRIVALS (RNAV)
CANBERRA, ACT (YSCB)**

7 SEP 2023

| | | | | | | | |
|--------------------------|--------------------|--------------|--------------|------------------|--------------------------|--|--|
| ATIS 116.7 127.45 263 | AWIS (AH) 116.7 | APP 124.5 | TWR 118.7 | SMC/ACD 121.7 | FIA (AH) ML CEN 125.9 | CTAF+AFRU (AH) AFRU+PAL (AH) 118.7 | Bearings are Magnetic Elevations in FEET AMSL |
|--------------------------|--------------------|--------------|--------------|------------------|--------------------------|--|--|



TRANSITIONS:

WAGGA: From WG VOR or NDB to MANDA:
(WG)

- Track 086° to MANDA
- Cross MANDA AT or ABV 9000ft
- Then follow ARRIVAL instructions

KACEY: From KACEY to MANDA:

- Track 072° to MANDA
- Cross MANDA AT or ABV 9000ft
- Then follow ARRIVAL instructions

ARRAN: From ARRAN to MANDA:

- Track 041° to NONUP
- Turn RIGHT, track 047° to MANDA
- Cross MANDA AT or ABV 9000ft
- Then follow ARRIVAL instructions

ARRIVAL: MANDA THREE

RWY 17 ALPHA:

- From MANDA track 047° to IGMET
- Cross IGMET AT or ABV 7000ft
- Track 047° to MEKON
- Cross MEKON AT or ABV 6000ft
- Track 047° to BARTN
- Turn RIGHT, track 080° to GOONY
- Turn RIGHT, track 170° to TALAG
- Cross TALAG AT or ABV 5000ft
- Track via RNP W RWY 17 (AR) or VOR RWY 17

RWY 17 X-RAY:

- From MANDA track 047° to IGMET
- Cross IGMET AT or ABV 7000ft
- Track 047° to MEKON
- Cross MEKON AT or ABV 6000ft
- Turn RIGHT, track 072° to VADMA
- Cross VADMA AT or ABV 6000ft
- Track via RNP X RWY 17 (AR)

COMMUNICATIONS FAILURE: PROCEDURE IN IMC

- Squawk 7600, comply with vertical navigation requirements, but not below MSA.
- Track via the latest STAR clearance to the nominated runway, then fly the most suitable approach in accordance with ERS A EMERG Section 1.5.

Changes: REVISED PROC.

SCBSR06-116