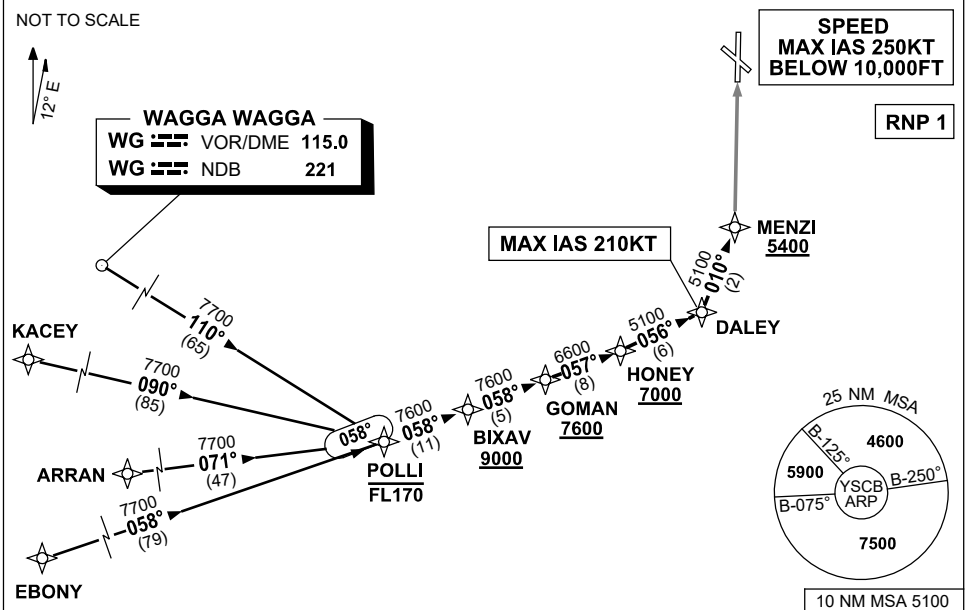


**STANDARD ARRIVAL ROUTE (STAR)  
POLLI NINE ALPHA ARRIVAL (RNAV)  
CANBERRA, ACT (YSCB)**

**7 SEP 2023**

ATIS 116.7 127.45 263	AWIS (AH) 116.7	APP 124.5	TWR 118.7	SMC/ACD 121.7	FIA (AH) ML CEN 125.9	CTAF+AFRU (AH) AFRU+PAL (AH) 118.7	Bearings are Magnetic Elevations in FEET AMSL
--------------------------	--------------------	--------------	--------------	------------------	--------------------------	--	--



**TRANSITIONS:**

**WAGGA:** From WG VOR or NDB to POLLI:  
(WG)  
• Track 110° to POLLI  
• Then follow ARRIVAL instructions

**KACEY:** From KACEY to POLLI:  
• Track 090° to POLLI  
• Then follow ARRIVAL instructions

**ARRAN:** From ARRAN to POLLI:  
• Track 071° to POLLI  
• Then follow ARRIVAL instructions

**EBONY:** From EBONY to POLLI:  
• Track 058° to POLLI  
• Then follow ARRIVAL instructions

**ARRIVAL: POLLI NINE**

**RWY 35 ALPHA:**

- Cross POLLI AT or BLW FL170
- From POLLI track 058° to BIXAV
- Cross BIXAV AT or ABV 9000FT
- Track 058° to GOMAN
- Cross GOMAN AT or ABV 7600FT
- Turn LEFT, track 057° to HONEY
- Cross HONEY AT or ABV 7000FT

- Turn LEFT, track 056° to DALEY  
**MAX IAS 210KT** from DALEY
- Turn LEFT, track 010° to MENZI for ILS, RNP Z, LOC, or VOR RWY 35 approach  
**Cross** MENZI AT or ABV 5400FT

**COMMUNICATIONS FAILURE: PROCEDURE IN IMC**

- Squawk 7600, comply with vertical navigation requirements, but not below MSA.
- Track via the latest STAR clearance to the nominated runway, then fly the most suitable approach in accordance with ERSA EMERG Section 1.5.