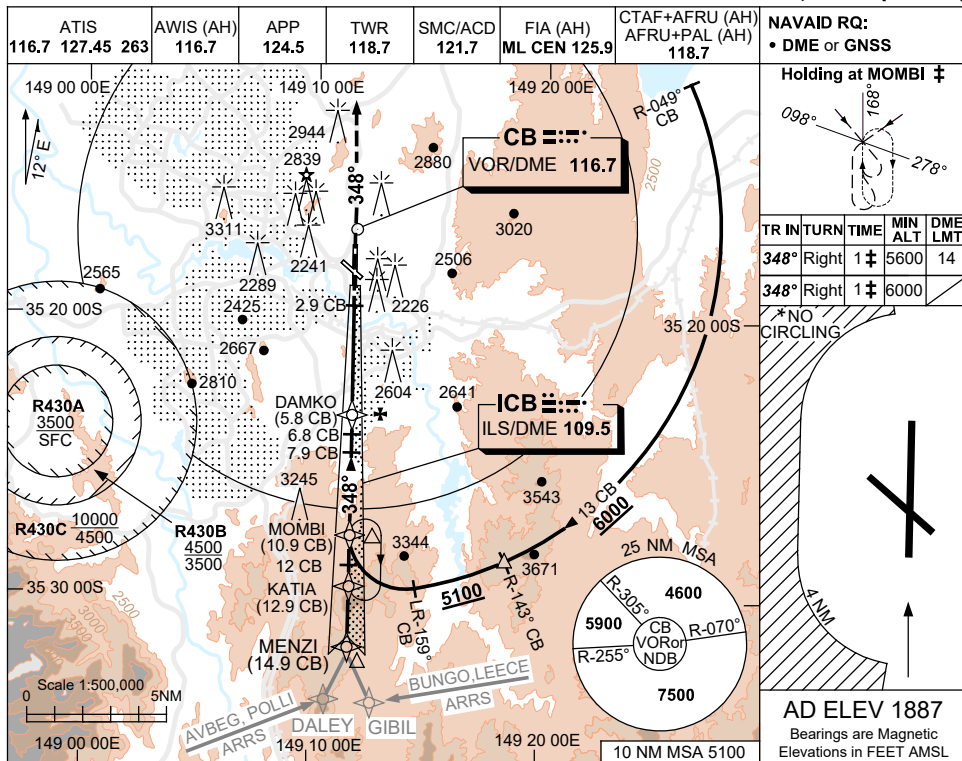


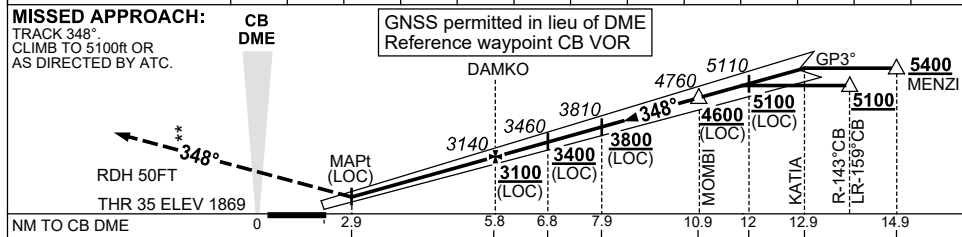
USE QNH

ILS-Y or LOC-Y RWY 35  
**CANBERRA, ACT (YSCB)**

5 SEP 2024



NM TO CB DME	4.5	5	5.8	6.8	7	7.9	9	10	10.9	11	12	12.9
ALT (3° APCH PATH)	2700	2870	3140	3460	3510	3810	4150	4470	4760	4790	5110	5400



NM TO CB DME	0	2.9	5.8	6.8	7.9	10.9	12	12.9	14.9
NM TO THR 35	0	0.9	3.8	4.8	5.9	8.9	10	10.9	12.9

**NOTES**

- †1. MAX IAS:  
 HLDG AT MOMBI  
 5600ft : 170KT.  
 6000ft : 210KT.
- \* 2. NO CIRCLING  
 BEYOND 4NM WEST  
 OF RWY 17 / 35.
- \* 3. MIN MISSED APCH  
 GRAD TO 3200ft,  
 THEN 2.5%.
- 4. COLOUR: SEE  
 SPEC NOTICES.

CATEGORY	A	B	C	D
S-I ILS CAT I (4.4% MAP) †	2170 (301) 0.8	750 RVR (VIS 0.8 550 RVR WITH ACTUAL QNH)		
S-I ILS CAT I (2.5% MAP)	2420 (551) 2.2	(VIS 1.6 WITH ACTUAL QNH)		
S-I LOC	2700 (831-3.9)			
CIRCLING *	3350 (1463-2.4)	3580 (1693-4.0)	3720 (1833-5.0)	
ALTERNATE	(1963-4.4)	(2193-6.0)	(2333-7.0)	

Changes: AD ELEV, Editorial.

SCBII02-180