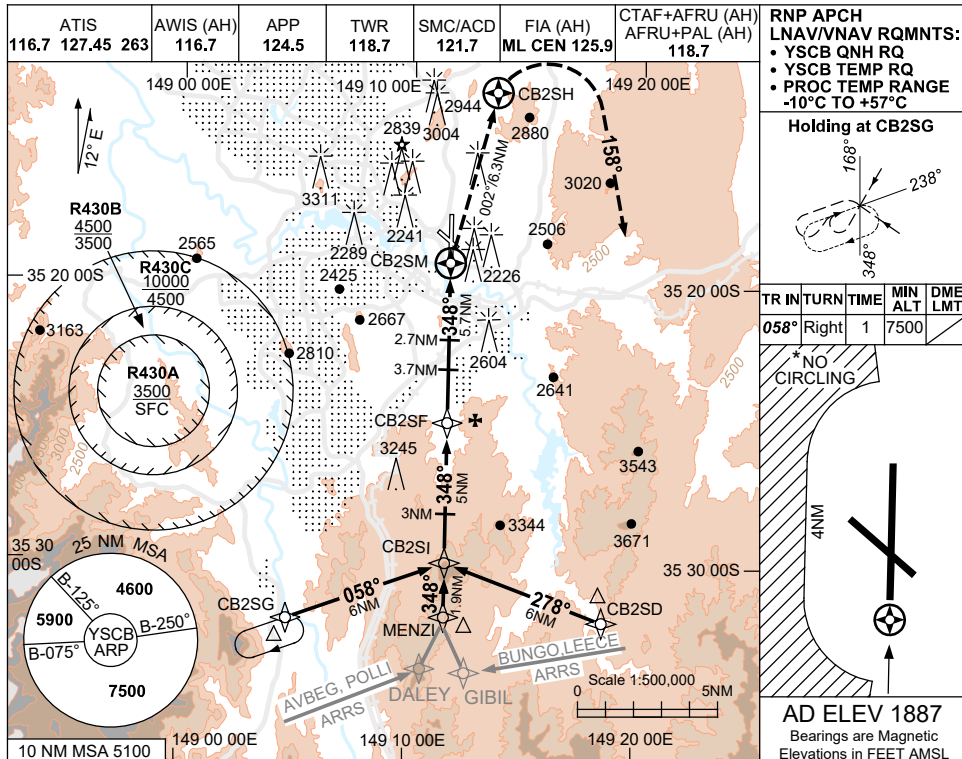


USE QNH

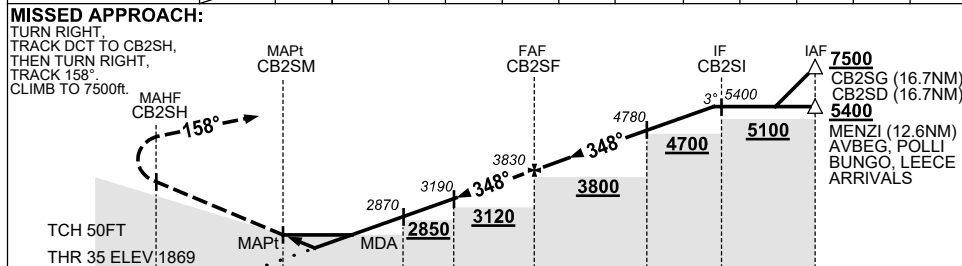
RNP Z RWY 35

5 SEP 2024

**CANBERRA, ACT (YSCB)**



NM TO NEXT WPT	CB2SM	1.3	1.9	2.7	3.7	4	5	CB2SF	1	2	3	4	4.9
ALT (3° APCH PATH)		2440	2620	2870	3190	3290	3600	3830	4150	4460	4780	5100	5400



NM TO CB2SM: 0.3, 2.7, 3.7, 5.7, 8.7, 10.7

**NOTES**

1. MAX IAS:  
INITIAL : 210KT.  
MISSED APCH TURN : 200KT.
2. NO CIRCLING BEYOND 4NM WEST OF RWY 17 / 35.
3. COLOUR: SEE SPEC NOTICES.

CATEGORY	A	B	C	D
LNAV/VNAV		2440 (571-2.3)		
LNAV		2620 (751-3.4)		
CIRCLING *	3350 (1463-2.4)	3580 (1693-4.0)		3720 (1833-5.0)
ALTERNATE	(1963-4.4)	(2193-6.0)		(2333-7.0)

Changes: AD ELEV, Editorial.

SCBGN02-180