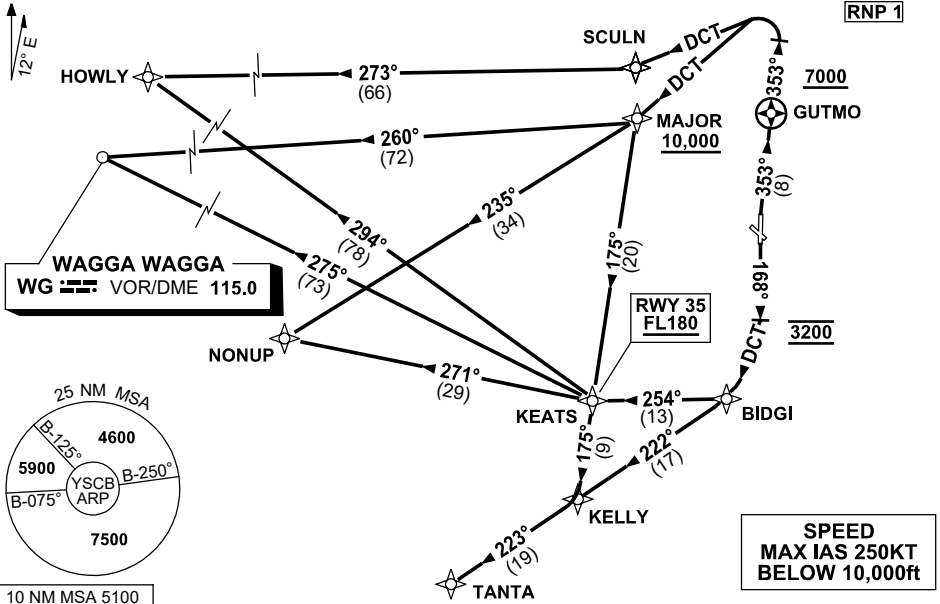


**STANDARD INSTRUMENT DEPARTURES (SID)
RWY 17/35 SOUTH & WEST (JET) (RNAV)
CANBERRA, ACT (YSCB)**

30 NOV 2023

ATIS 116.7 127.45 263	AWIS (AH) 116.7	SMC/ACD 121.7	TWR 118.7	DEP 125.9	FIA (AH) ML CEN 125.9	CTAF+AFRU (AH) AFRU+PAL (AH) 118.7	BRG are MAG ELEV in FT AMSL
--------------------------	--------------------	------------------	--------------	--------------	--------------------------	--	--------------------------------

NOT TO SCALE



HOWLY	NINE	DEPARTURE (RNAV)
WAGGA (WG)	TWO	DEPARTURE (RNAV)
NONUP	NINE	DEPARTURE (RNAV)
TANTA	THREE	DEPARTURE (RNAV)

- RWY 35**
- GRAD 6.8% to 3400ft thence 3.3%
 - NOT BEFORE DER turn RIGHT
 - Track 353° to GUTMO, thence 353°
 - After passing GUTMO AND 7000ft, turn LEFT
- For HOWLY
- Track DCT to SCULN
 - Track 273° to HOWLY, thence as cleared
- For WG VOR
- Track DCT to MAJOR
 - Cross MAJOR AT or ABV 10,000ft
 - Track 260° to WG VOR, thence as cleared
- For NONUP
- Track DCT to MAJOR
 - Cross MAJOR AT or ABV 10,000ft
 - Track 235° to NONUP, thence as cleared
- For TANTA
- Track DCT to MAJOR
 - Cross MAJOR AT or ABV 10,000ft
 - Turn LEFT, track 175° to KEATS
 - Cross KEATS AT or ABV FL180
 - Track 175° to KELLY
 - Turn RIGHT, track 223° to TANTA, thence as cleared

- RWY 17**
- GRAD 4.9% to 4800ft thence 3.3%
 - Track 168°
 - AT 3200ft turn RIGHT, track DCT to BIDGI (approx 180°)
- For HOWLY
- At BIDGI turn RIGHT, track 254° to KEATS
 - At KEATS turn RIGHT, track 294° to HOWLY, thence as cleared
- For WG VOR
- At BIDGI turn RIGHT, track 254° to KEATS
 - At KEATS turn RIGHT, track 275° to WG VOR, thence as cleared
- For NONUP
- At BIDGI turn RIGHT, track 254° to KEATS
 - At KEATS turn RIGHT, track 271° to NONUP, thence as cleared
- For TANTA
- Turn RIGHT, track 222° to KELLY,
 - Track 223° to TANTA, thence as cleared

Changes: RWY 35 GRAD, MAG TRACK, Editorial.

SCBDP06-177