

**STANDARD INSTRUMENT DEPARTURES (SID)  
CANBERRA THREE DEPARTURE (RADAR) - RWY 12, 17 & 35  
CANBERRA, ACT (YSCB)**

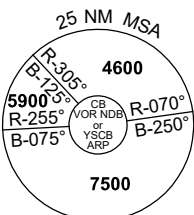
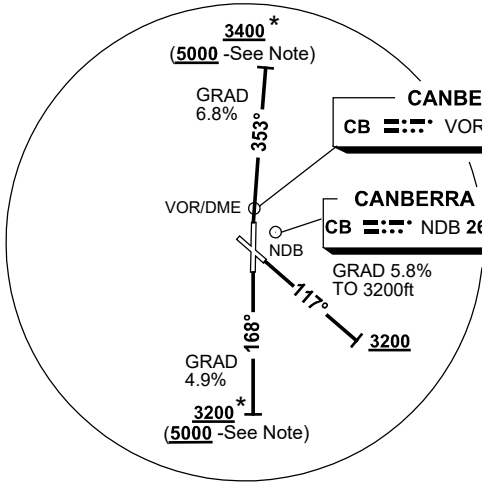
**30 NOV 2023**

ATIS 116.7 127.45 263	AWIS (AH) 116.7	SMC/ACD 121.7	TWR 118.7	DEP TRACKS EAST 124.5 TRACKS WEST 125.9	FIA (AH) ML CEN 125.9	CTAF+AFRU (AH) AFRU+PAL (AH) 118.7	BRG are MAG ELEV in FT AMSL
--------------------------	--------------------	------------------	--------------	-----------------------------------------------	--------------------------	------------------------------------------	--------------------------------

NOT TO SCALE



**SPEED  
MAX IAS 250KT  
BELOW 10,000ft**



10 NM MSA 5100

GNSS permitted in lieu of DME  
Reference waypoint CB VOR

**NOTE \***  
NOT BELOW 5000ft  
OUTSIDE TOWER  
HOURS-NAP REF

**CANBERRA THREE DEPARTURE (RADAR)**

**RWY 12**

- GRAD 5.8% to 3200ft thence 3.3%
- Track 117°
- AT 3200ft turn to assigned heading or track

**RWY 17**

- GRAD 4.9% to 4800ft thence 3.3%
- Track 168°
- AT 3200ft (5000ft-See NOTE \*) turn to assigned heading or track

**RWY 35**

- GRAD 6.8% to 3400ft thence 3.3%
- NOT BEFORE DER turn RIGHT, track 353°
- AT 3400ft (5000ft-See NOTE \*) turn to assigned heading

**COMMUNICATIONS FAILURE PROCEDURE**

On recognition of communication failure

- Squawk 7600.
- Maintain last assigned vector for two minutes and, if necessary, climb to minimum safe altitude to maintain terrain clearance, then
- Proceed in accordance with the latest ATC route clearance acknowledged.

Changes: RWY 35 GRAD, NEW LOGO.

SCBDP01-177