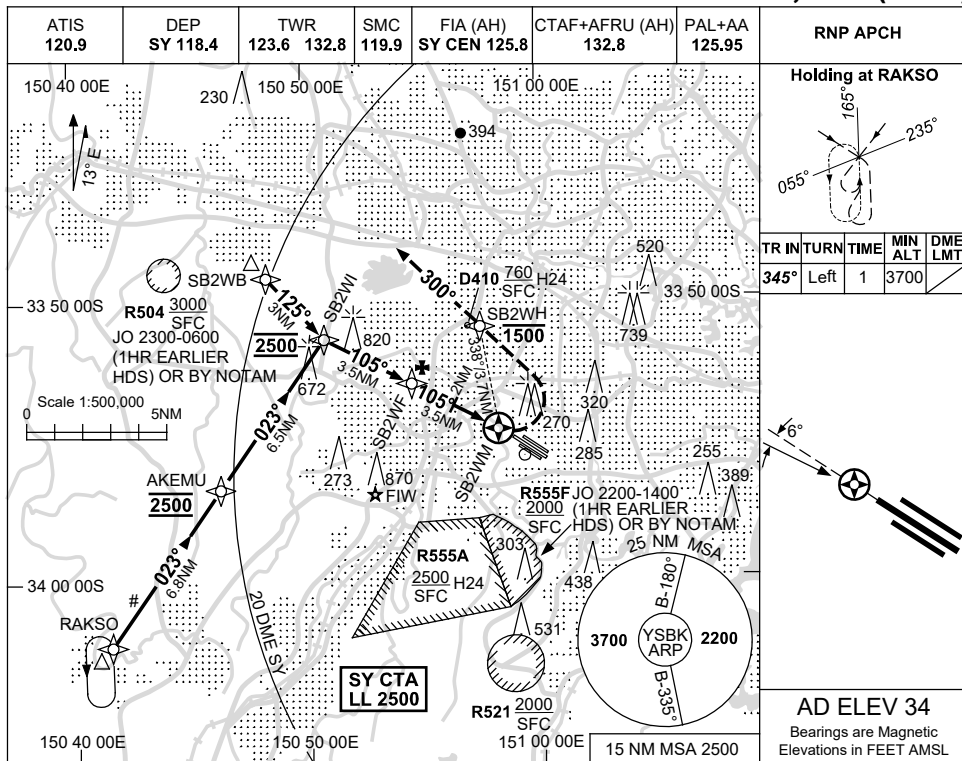


USE QNH

RNP RWY 11C

13 JUN 2024

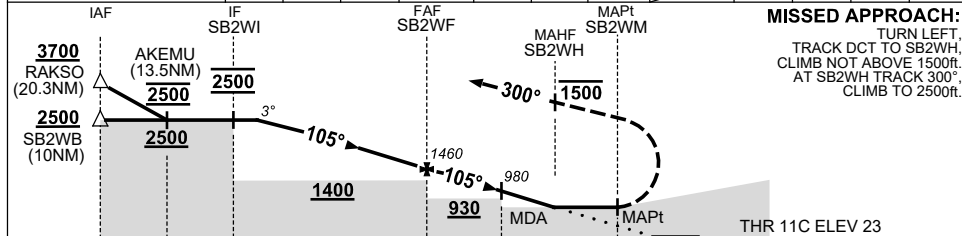
SYDNEY/BANKSTOWN, NSW (YSBK)



TR	IN	TURN	TIME	MIN ALT	DME LMT
345°	Left	1		3700	

**AD ELEV 34**  
Bearings are Magnetic  
Elevations in FEET AMSL

NM TO NEXT WPT	3.3	2	1	SB2WF	3	2	1.1	SB2WM			
ALT (3° APCH PATH)	2500	2090	1780	1460	1300	980	680				



**MISSED APPROACH:**  
TURN LEFT  
TRACK DCT TO SB2WH;  
CLIMB NOT ABOVE 1500ft.  
AT SB2WH TRACK 300°.  
CLIMB TO 2500ft.

NM TO SB2WM 7 3.5 2.0 0.9

**NOTES**

1. MAX IAS:  
HOLDING : 150KT.  
INITIAL : 180KT.  
MISSED APCH TURN : 160KT.
2. CIRCLING BEYOND 2.5NM SW OF YSBK WILL REQUIRE A CLEARANCE INTO R555A.
3. INITIAL SEGMENT COINCIDENT WITH WESTMEAD HOSP RNP 052 APPROACH.
4. APCH APPROVAL RQ FM SY ATIS. ALL ACFT TO TRACK VIA RAKSO UNLESS ADVISED BY ATC.

CATEGORY	A	B	C	D
LNAV	680 (657-3.7)			<b>NOT APPLICABLE</b>
CIRCLING	800 (766-2.4)		960 (926-4.0)	
ALTERNATE	(1266-4.4)		(1426-6.0)	

Changes: AKEMU, MINIMA, MAG VAR, ATIS, WPT NAMING CONVENTION, Editorial.

SBKGN01-179