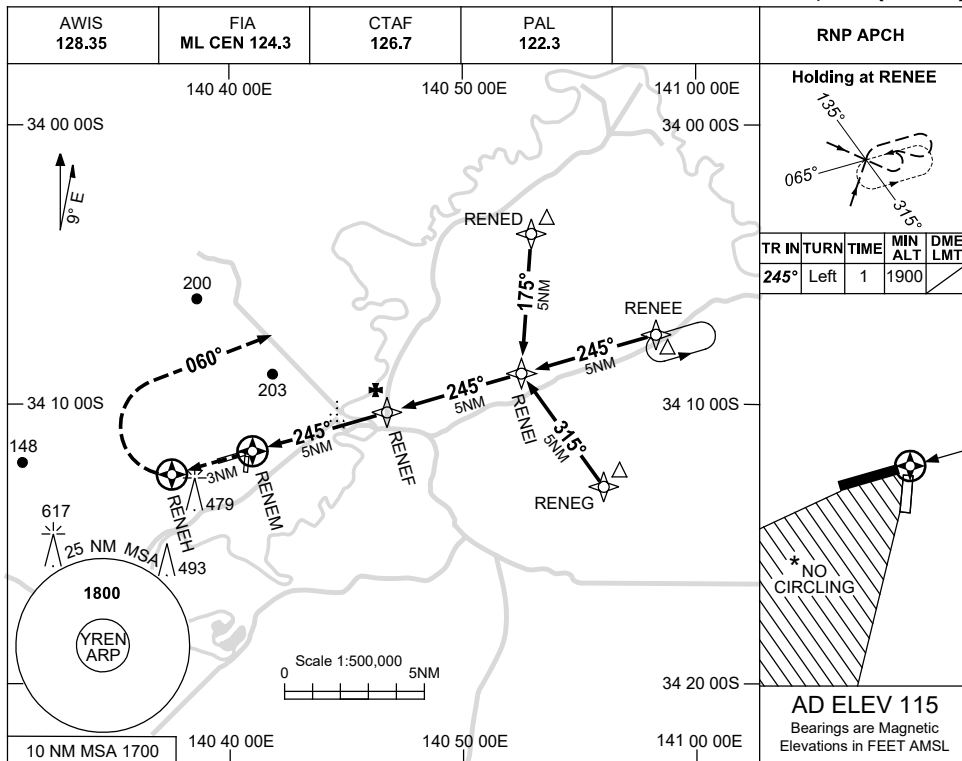


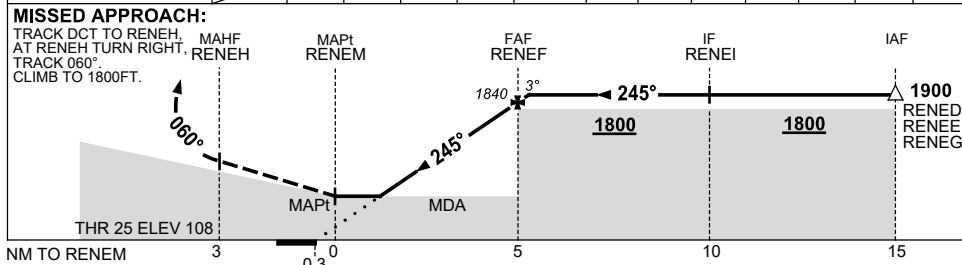
USE QNH

RNP RWY 25
RENMARK, SA (YREN)

15 JUN 2023



NM TO NEXT WPT	RENEM	1.5	2	3	4	RENEF	0.2						
ALT (3° APCH PATH)		720	880	1200	1520	1840	1900						



NOTES

CATEGORY	A	B	C	D
LNAV	720 (605-3.4)			NOT APPLICABLE
CIRCLING *	800 (685-2.4)		890 (775-4.0)	
ALTERNATE	(1185-4.4)		(1275-6.0)	

- 1. MAX IAS: INITIAL : 230KT.
- *2. NO CIRCLING IN SECTOR SW OF RWYS 36 AND 07.

Changes: THR ELEV, CHART TITLE, PBN SPECIFICATION BOX, Editorial.

RENGN02-175