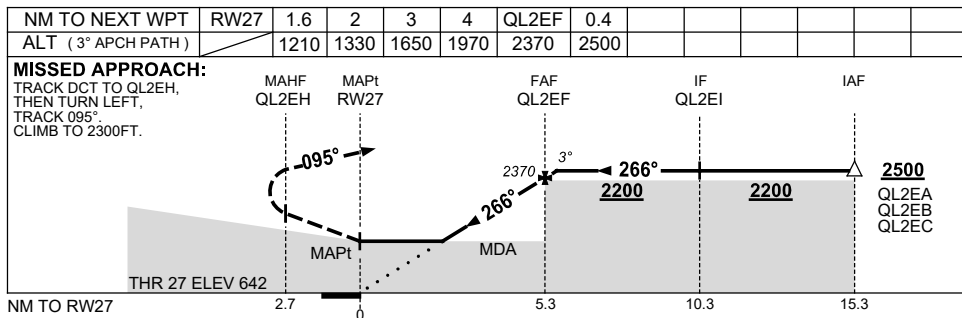
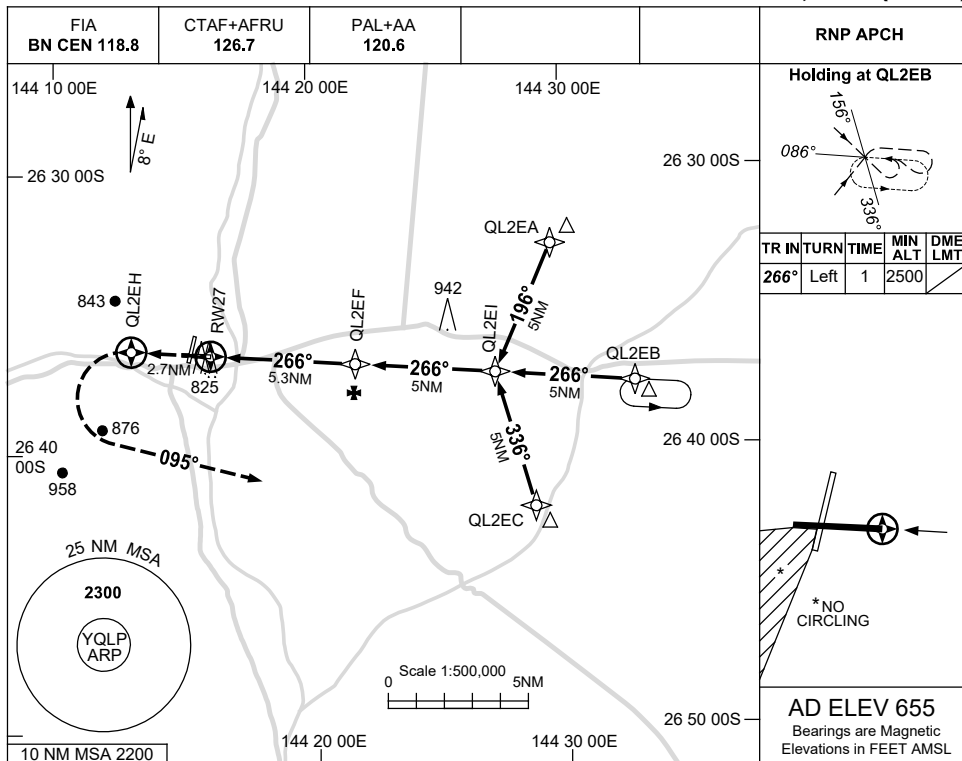


USE QNH

RNP RWY 27  
**QUILPIE, QLD (YQLP)**

1 DEC 2022



**NOTES**

CATEGORY	A	B	C	D
LNAV	1210 (568-3.2)			NOT APPLICABLE
CIRCLING *	1250 (595-2.4)	1480 (825-4.0)		
ALTERNATE	(1095-4.4)		(1325-6.0)	

- 1. MAX IAS: INITIAL : 230KT.
- \*2. NO CIRCLING SOUTH WEST OF RWY 18/36 & 09/27.

Changes: 942FT MAST, 825FT MAST, WPT NAMING CONVENTION.

QLPGN02-173