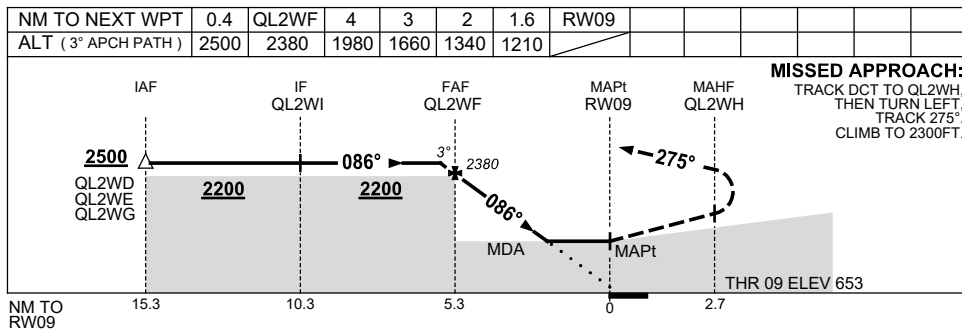
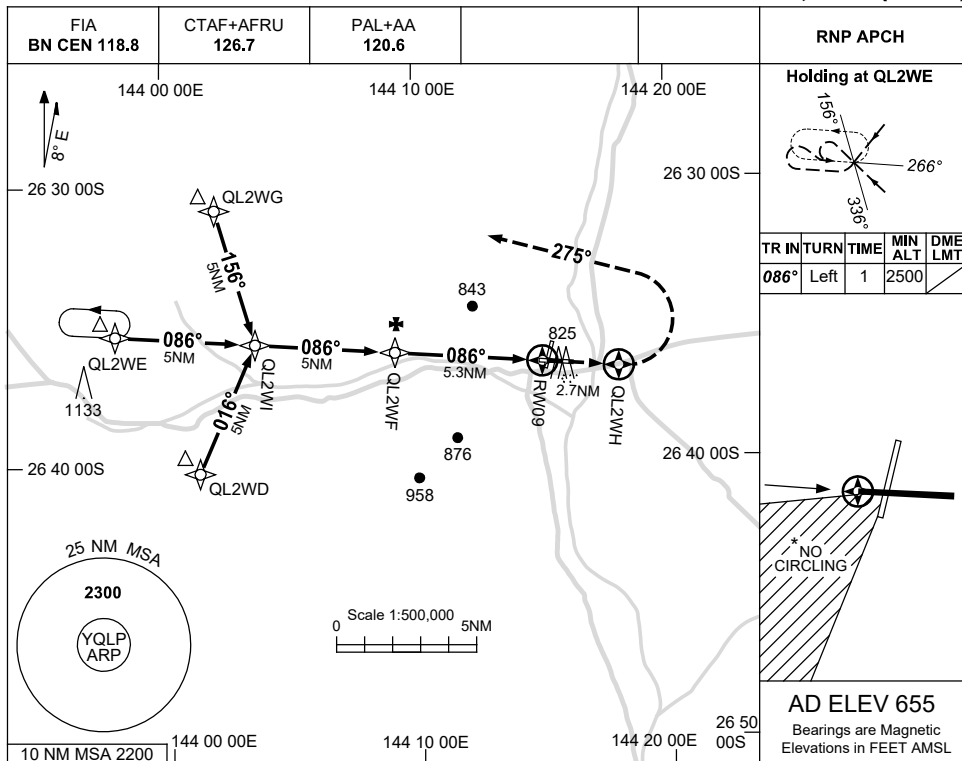


USE QNH

RNP RWY 09
QUILPIE, QLD (YQLP)

1 DEC 2022



NOTES

| CATEGORY | A | B | C | D |
|------------|----------------|---|----------------|----------------|
| LNAV | 1210 (555-3.1) | | | NOT APPLICABLE |
| CIRCLING * | 1250 (595-2.4) | | 1480 (825-4.0) | |
| ALTERNATE | (1095-4.4) | | (1325-6.0) | |

- MAX IAS:
INITIAL : 230KT.
- NO CIRCLING
SOUTH WEST OF
RWY 18/36 & 09/27.

Changes: 1133FT MAST, 825FT MAST, WPT NAMING CONVENTION.

QLPGN01-173