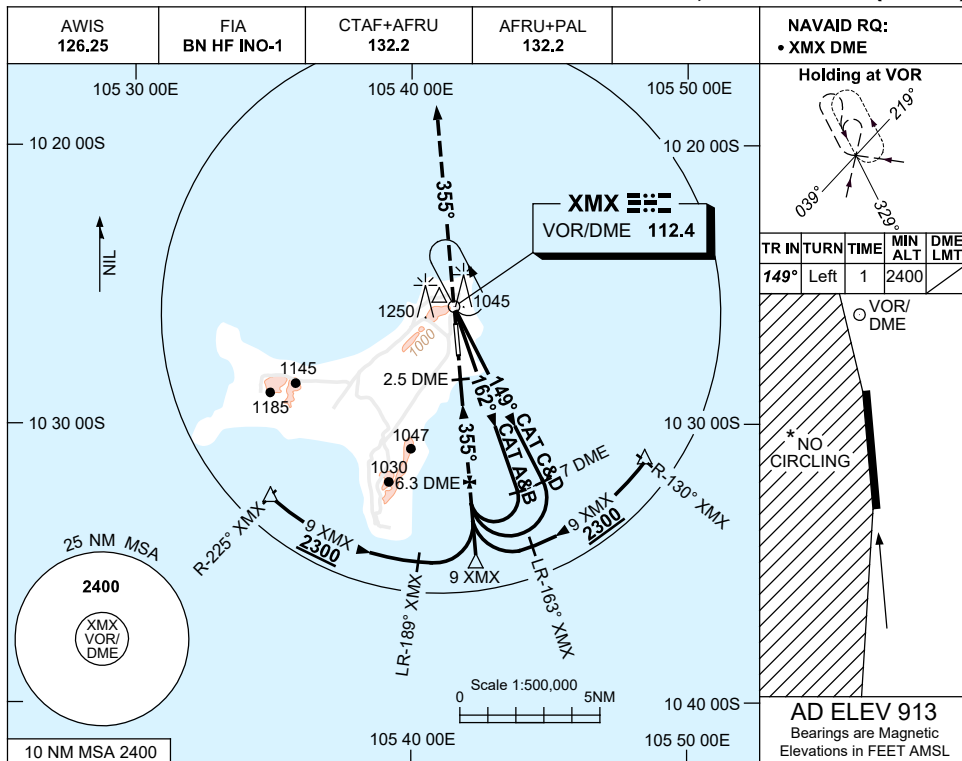
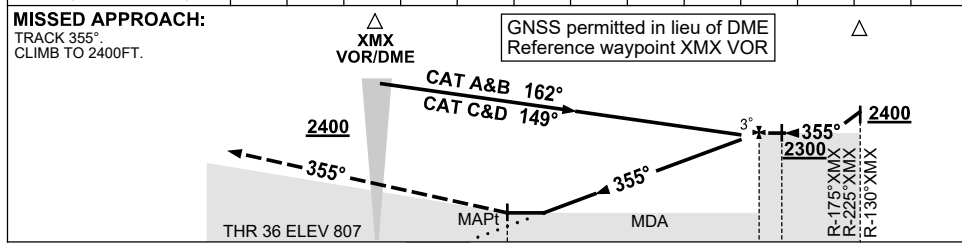


USE QNH **VOR-Z RWY 36**
CHRISTMAS ISLAND, AUSTRALIA (YPXM)

16 JUN 2022



DIST BY DME	3.5	4	5	6	6.3					
ALT (3° APCH PATH)	1400	1570	1890	2210	2300					



NM BY DME 0 2.5 6.3 7 9

NOTES

CATEGORY	A	B	C	D
S-I VOR/DME	1400 (593-3.4)			
CIRCLING *	1650 (737-2.4)	1750 (837-4.0)	1750 (837-5.0)	
ALTERNATE	(1237-4.4)	(1337-6.0)	(1334-7.0)	

1. MAX IAS:
 INITIAL :
 CAT A&B 140KT.
 CAT C&D 210KT.
- *2. NO CIRCLING WEST OF RWY 18/36.
3. COLOUR: SEE SPEC NOTICES.

Changes:AFRU+PAL

PXMV003-171