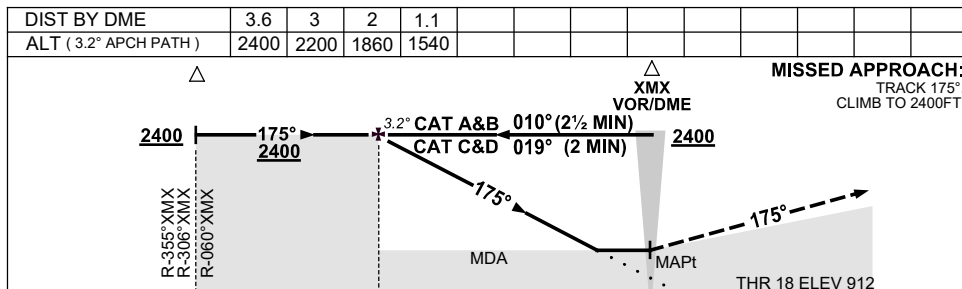
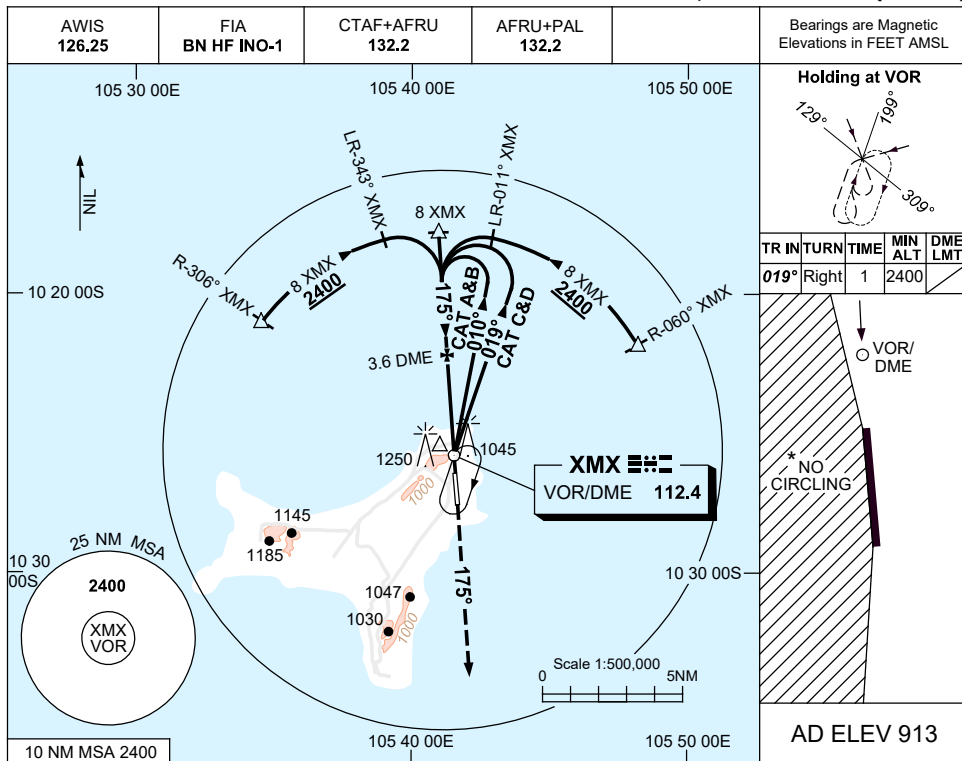


**USE QNH
CHRISTMAS ISLAND, AUSTRALIA (YPXM)**

VOR RWY 18

16 JUN 2022



NOTES

1. MAX IAS:
INITIAL : 210KT.
- *2. NO CIRCLING WEST OF RWY 18/36.
3. COLOUR: SEE SPEC NOTICES.

| CATEGORY | A | B | C | D |
|-------------|-----------------------|-----------------------|-----------------------|-----------------------|
| S-I VOR | | 1540 (627-3.4) | | |
| S-I VOR/DME | | 1540 (627-3.4) | | |
| CIRCLING* | 1650 (737-2.4) | | 1750 (837-4.0) | 1750 (837-5.0) |
| ALTERNATE | (1237-4.4) | | (1337-6.0) | |

Changes: AFRU+PAL

PXMV001-171