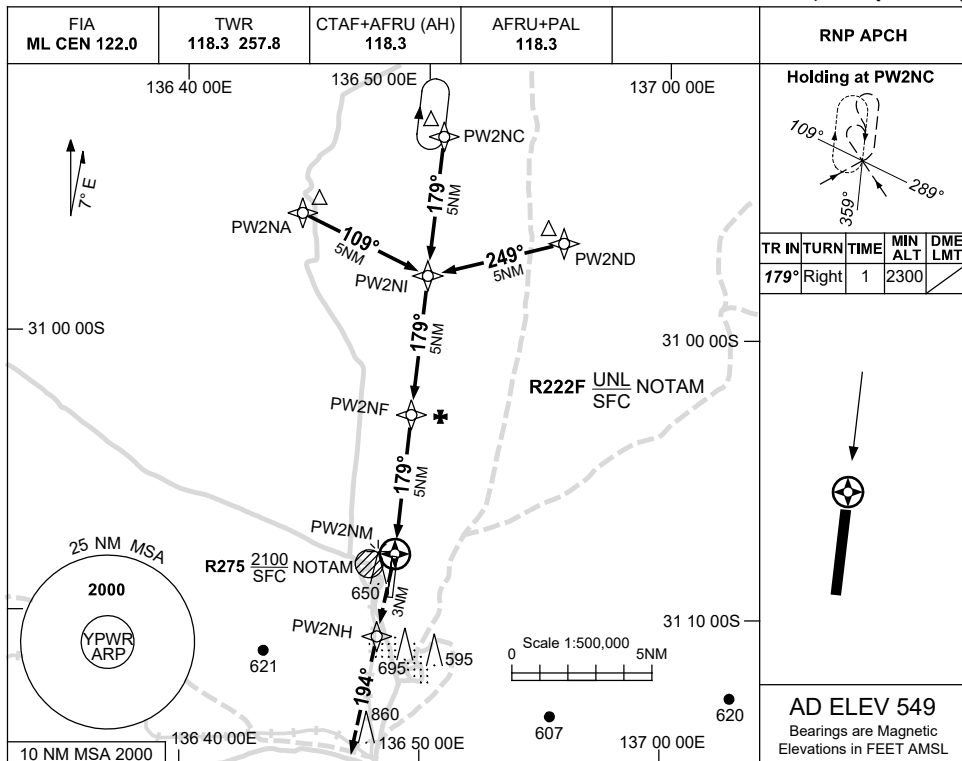


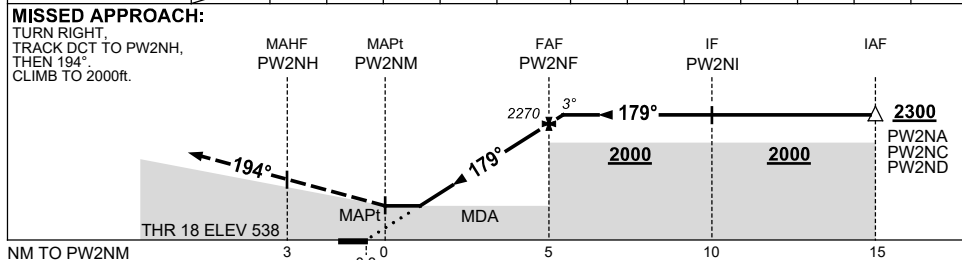
USE QNH

RNP RWY 18
WOOMERA, SA (YPWR)

5 SEP 2024



NM TO NEXT WPT	PW2NM	1.5	2	3	4	PW2NF	0.1				
ALT (3° APCH PATH)		1150	1310	1630	1950	2270	2300				



NOTES

CATEGORY	A	B	C	D
LNAV	1150 (612-3.5)			
CIRCLING	1190 (641-2.4)	1290 (741-4.0)	1340 (791-5.0)	
ALTERNATE	(1141-4.4)	(1241-6.0)	(1291-7.0)	

- MAX IAS: INITIAL : 210KT.
- AWIS (PHONE) 08 8150 3820
- PROC NOT AVBL WHEN R275 ACTIVE

Changes: THR ELEV, WPT NAMING CONVENTION, Editorial.

PWRGN01-180