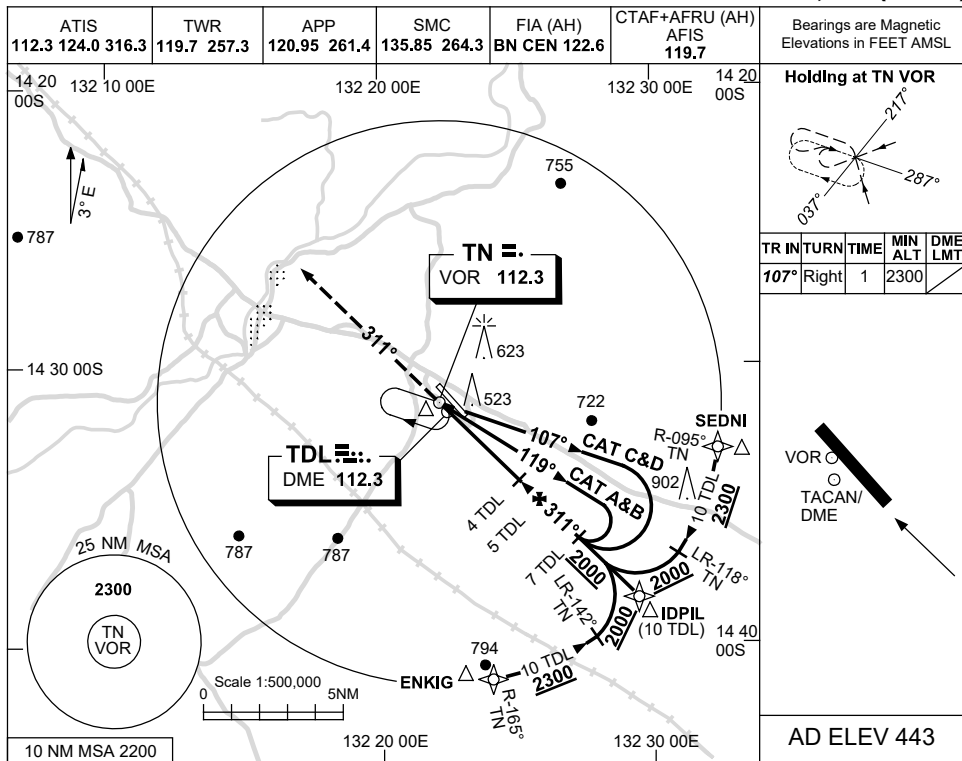


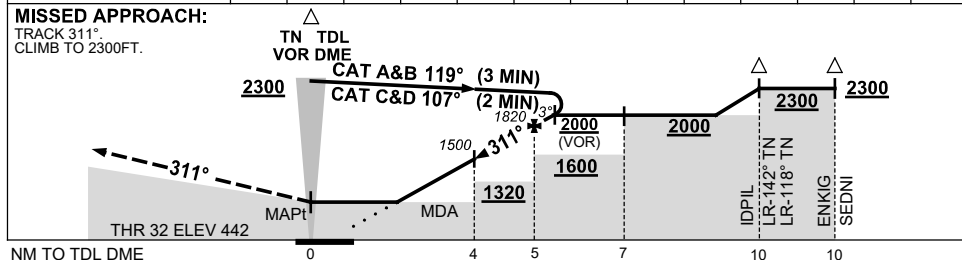
USE QNH

VOR RWY 32  
TINDAL, NT (YPTN)

30 NOV 2023



NM TO TDL DME	2.5	3	4	5	5.6					
ALT (3° APCH PATH)	1010	1180	1500	1820	2000					



**NOTES**

CATEGORY	A	B	C	D
S-I VOR/DME	<b>1010 (567-3.2)</b>			
S-I VOR	<b>1250 (807-4.6)</b>			
CIRCLING	<b>1260 (817-2.4)</b>	<b>1290 (847-4.0)</b>	<b>1350 (907-5.0)</b>	
ALTERNATE	(1317-4.4)		(1347-6.0)	
	(1407-7.0)			

1. MAX IAS:  
INITIAL : 210KT.

Changes: AFIS, Editorial.

PTNVO02-177