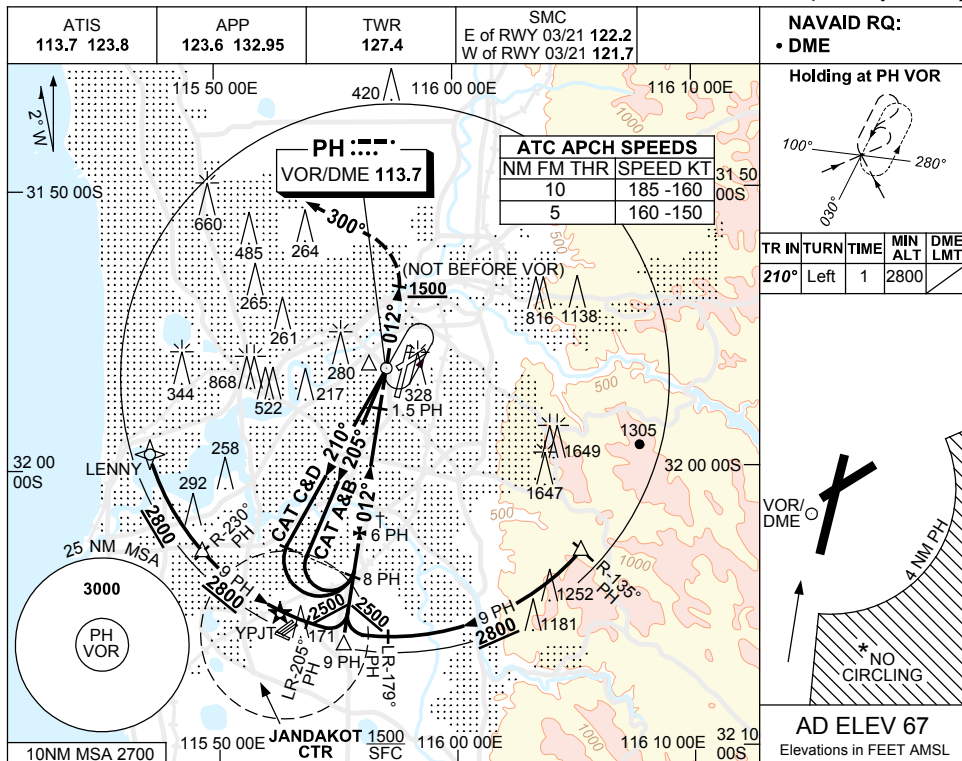


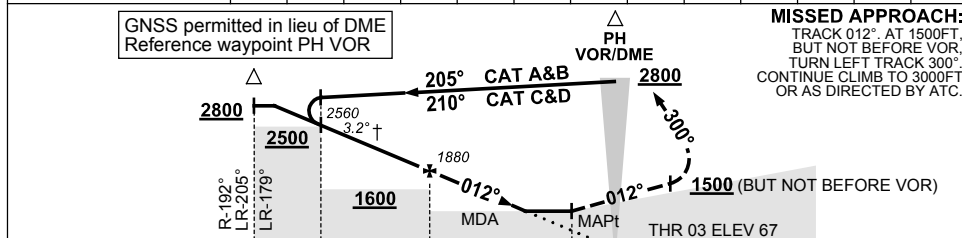
USE QNH

VOR RWY 03
PERTH, WA (YPPH)

23 MAR 2023



NM TO PH DME	8.7	8	7	6	5	4	3	2				
ALT (3.2° APCH PATH)	2800	2560	2220	1880	1540	1200	860	520				



CATEGORY	A	B	C	D
S-I VOR/DME	520 (453-1.5)			
CIRCLING *	760 (693-2.4)		1440 (1373-4.0) 1440 (1373-5.0)	
ALTERNATE ‡	(1193-4.4)		(1873-6.0) (1873-7.0)	

NOTES

- * 1. NO CIRCLING CAT C&D ACFT BEYOND 4NM PH E OF RWY 03/21 AND 06/24.
- † 2. ACFT MAY BE RADAR VECTORED TO FNA.
- * 3. SPECIAL ALTN MNM NOT APPLICABLE.
- 4. COLOUR: SEE SPEC NOTICES.

Changes: VIS, Editorial.

PPHV001-174