

**STANDARD INSTRUMENT ARRIVAL (STAR)  
LAVEX ONE ALPHA ARRIVALS (NON-JET) (RNAV) RWY 21/24  
PERTH, WA (YPPH)**

**5 SEP 2024**

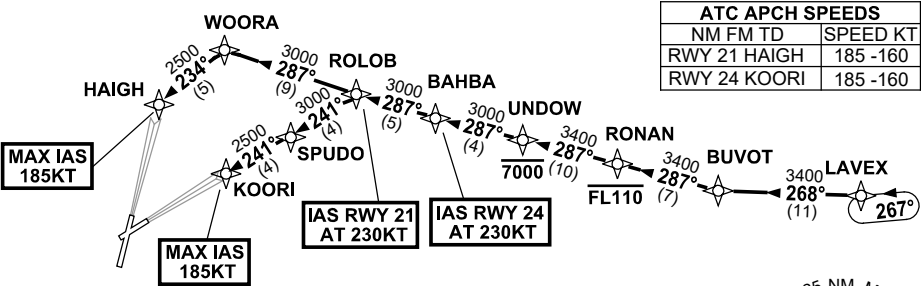
ATIS 113.7 123.8	APP 123.6	TWR 127.4	SMC E of RWY 03/21 122.2 W of RWY 03/21 121.7	Bearings are Magnetic Elevations in FEET AMSL
---------------------	--------------	--------------	---	--

NOT TO SCALE

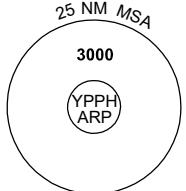


**RNP1**

**SPEED  
MAX IAS 250KT  
BELOW 10,000ft**



ATC APCH SPEEDS		
NM	FM TD	SPEED KT
RWY 21	HAIGH	185 -160
RWY 24	KOORI	185 -160



10 NM MSA 2700

**ARRIVAL: LAVEX ONE**

**RWY 21 ALPHA:**

- From LAVEX, track 268° to BUVOT,
- Turn RIGHT, track 287° to RONAN,  
    **Cross** RONAN AT or BLW FL110,
- Track 287° to UNDOWN,  
    **Cross** UNDOWN AT or BLW 7000ft,
- Track 287° to BAHBA,
- Track 287° to ROLOB,  
    **IAS AT 230KT** from ROLOB,
- Track 287° to WOORA,
- Turn LEFT, track 234° to HAIGH,  
    for ILS, RNP or  
    LOC RWY 21 APPROACH,  
    MAX IAS 185KT from HAIGH.

**RWY 24 ALPHA:**

- From LAVEX, track 268° to BUVOT,
- Turn RIGHT, track 287° to RONAN,  
    **Cross** RONAN AT or BLW FL110,
- Track 287° to UNDOWN,  
    **Cross** UNDOWN AT or BLW 7000ft,
- Track 287° to BAHBA,  
    **IAS AT 230KT** from BAHBA,
- Track 287° to ROLOB,
- Turn LEFT, track 241° to SPUDO,
- Track 241° to KOORI,  
    for ILS, RNP or  
    LOC RWY 24 APPROACH,  
    MAX IAS 185KT from KOORI.

**COMMUNICATIONS FAILURE: PROCEDURE IN IMC**

- Squawk 7600, comply with vertical navigation requirements, but not below MSA.
- Track via the latest STAR clearance to the nominated runway, then fly the most suitable approach in accordance with ERSA EMERG Section 1.5.

Changes: Editorial.

PPHSR26-180