

**STANDARD INSTRUMENT ARRIVAL (STAR)
JULIM SIX ALPHA ARRIVALS (JET) (RNAV) RWY 21/24
PERTH, WA (YPPH)**

5 SEP 2024

ATIS 113.7 123.8	APP 123.6 132.95	TWR 127.4	SMC E of RWY 03/21 122.2 W of RWY 03/21 121.7	Bearings are Magnetic Elevations in FEET AMSL
---------------------	---------------------	--------------	-----------------------------------------------------	--------------------------------------------------

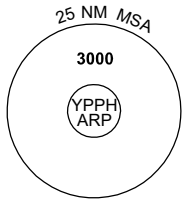
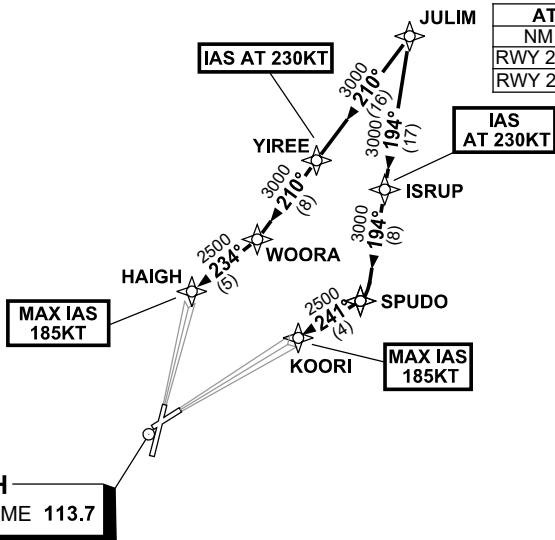
NOT TO SCALE



**SPEED
MAX IAS 250KT
BELOW 10,000ft**

RNP1

ATC APCH SPEEDS	
NM FM TD	SPEED KT
RWY 21 HAIGH	185 -160
RWY 24 KOORI	185 -160



10 NM MSA 2700

ARRIVAL: JULIM SIX

RWY 21 ALPHA:

- From JULIM, track 210° to YIREE
IAS AT 230KT from YIREE
- Track 210° to WOORA
- Turn RIGHT, track 234° to HAIGH for ILS, RNP or LOC RWY 21 APPROACH
MAX IAS 185KT from HAIGH

RWY 24 ALPHA:

- From JULIM, track 194° to ISRUP
IAS AT 230KT from ISRUP
- Track 194° to SPUDO
- Turn RIGHT, track 241° to KOORI for ILS, RNP or LOC RWY 24 APPROACH
MAX IAS 185KT from KOORI

COMMUNICATIONS FAILURE: PROCEDURE IN IMC

- Squawk 7600, comply with vertical navigation requirements, but not below MSA.
- Track via the latest STAR clearance to the nominated runway, then fly the most suitable approach in accordance with ERSA EMERG Section 1.5.

Changes: Editorial.

PPHSR24-180