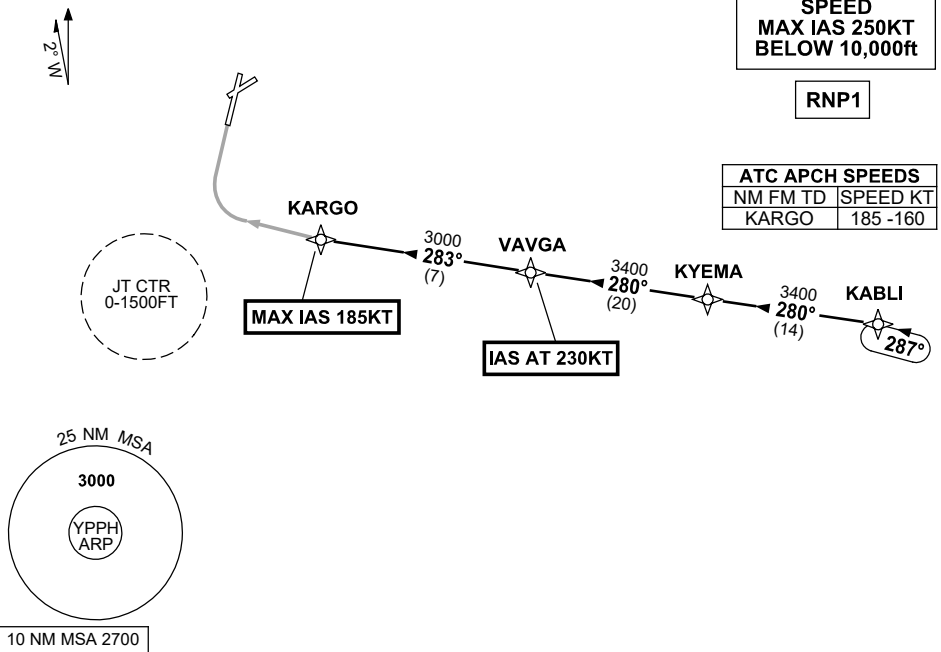


**STANDARD INSTRUMENT ARRIVAL (STAR)
KABLI ONE X-RAY ARRIVAL (JET) (RNAV)
PERTH, WA (YPPH)**

13 JUN 2024

ATIS 113.7 123.8	APP 123.6	TWR 127.4	SMC E of RWY 03/21 122.2 W of RWY 03/21 121.7	Bearings are Magnetic Elevations in FEET AMSL
---------------------	--------------	--------------	---	--

NOT TO SCALE



ARRIVAL:

KABLI ONE

- From KABLI, track 280° to KYEMA,
- Track 280° to VAVGA,
IAS AT 230KT from VAVGA,
- Turn RIGHT, track 283° to KARGO,
MAX IAS 185KT from KARGO.

- RWY 03 X-RAY:** • From KARGO track via RNP X RWY 03 (AR).

COMMUNICATIONS FAILURE: PROCEDURE IN IMC

- Squawk 7600, comply with vertical navigation requirements, but not below MSA.
- Track via the latest STAR clearance to the nominated runway, then fly the most suitable approach in accordance with ERSA EMERG Section 1.5.

Changes: KABLI REPLACES BEVLY, VALIDITY INDICATOR.

PPHSR22-179