

**STANDARD INSTRUMENT ARRIVAL (STAR)  
KABLI ONE VICTOR ARRIVAL (JET) (RNAV)  
PERTH, WA (YPPH)**

**13 JUN 2024**

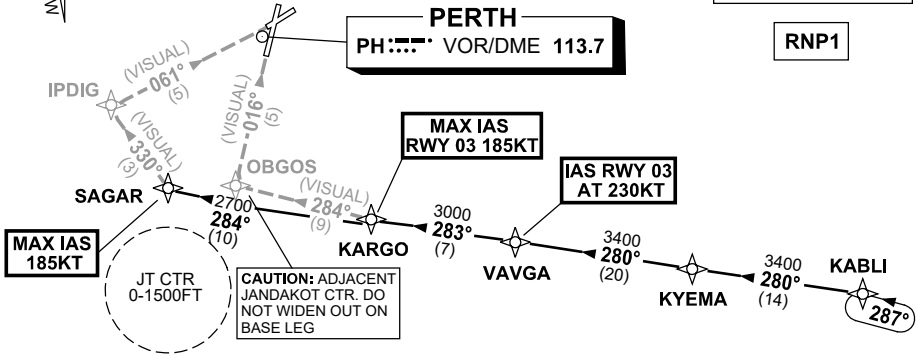
ATIS 113.7 123.8	APP 123.6	TWR 127.4	SMC E of RWY 03/21 122.2 W of RWY 03/21 121.7	Bearings are Magnetic Elevations in FEET AMSL
---------------------	--------------	--------------	---	--

NOT TO SCALE

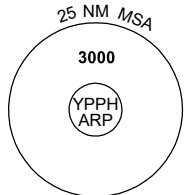


**SPEED  
MAX IAS 250KT  
BELOW 10,000ft**

**RNP1**



ATC APCH SPEEDS	
NM FM TD	SPEED KT
RWY 03 VAVGA	AT 230
RWY 06 20NM	AT 230
RWY 03 KARGO	185-160
RWY 06 SAGAR	185-160
5	160-150



10 NM MSA 2700

**ARRIVAL:**

**KABLI ONE**

- From KABLI, track 280° to KYEMA
- Track 280° to VAVGA
- IAS RWY 03 AT 230KT from VAVGA
- Turn RIGHT, track 283° to KARGO
- MAX IAS RWY 03 185KT from KARGO

**RWY 03 VICTOR:** • From KARGO track 284° VISUAL to OBGOS for VISUAL final RWY 03

**RWY 06 VICTOR:** • From KARGO track 284° to SAGAR

MAX IAS 185KT from SAGAR

- Turn RIGHT, track 330° VISUAL to IPDIG for VISUAL final RWY 06

**COMMUNICATIONS FAILURE: PROCEDURE IN IMC**

- Squawk 7600, comply with vertical navigation requirements, but not below MSA.
- Track via the latest STAR clearance to the nominated runway, then fly the most suitable approach in accordance with ERSA EMERG Section 1.5.

Changes: KABLI REPLACES BEVLY, VALIDITY INDICATOR.

PPHSR21-179