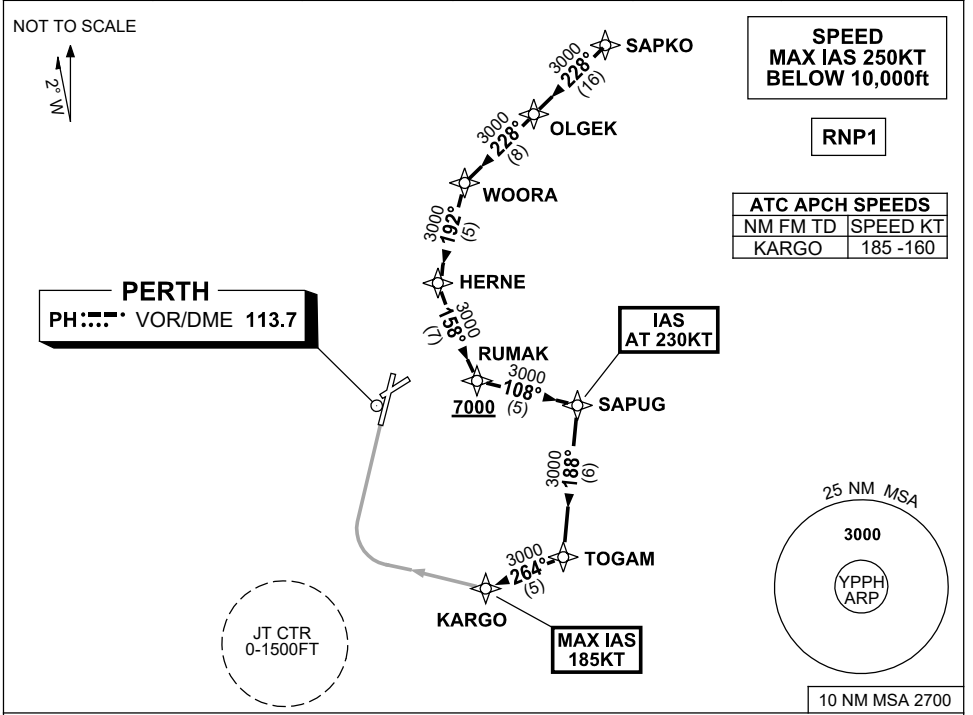


**STANDARD INSTRUMENT ARRIVAL (STAR)
SAPKO TWO X-RAY ARRIVALS (NON-JET) (RNAV)
PERTH, WA (YPPH)**

5 SEP 2024

ATIS 113.7 123.8	APP 123.6 132.95	TWR 127.4	SMC E of RWY 03/21 122.2 W of RWY 03/21 121.7	Bearings are Magnetic Elevations in FEET AMSL
---------------------	---------------------	--------------	---	--



ARRIVAL:

SAPKO TWO

- From SAPKO track 228° to OLGEK,
- Track 228° to WOORA,
- Turn LEFT, track 192° to HERNE,
- Turn LEFT, track 158° to RUMAK,
Cross RUMAK AT or ABV 7000ft,
- Turn LEFT, track 108° to SAPUG,
IAS AT 230KT from SAPUG,
- Turn RIGHT, track 188° to TOGAM,
- Turn RIGHT, track 264° to KARGO,
MAX IAS 185KT from KARGO.

RWY 03 X-RAY:

- From KARGO, turn RIGHT, track via RNP X RWY 03 (AR).

COMMUNICATIONS FAILURE: PROCEDURE IN IMC

- Squawk 7600, comply with vertical navigation requirements, but not below MSA.
- Track via the latest STAR clearance to the nominated runway, then fly the most suitable approach in accordance with ERS A EMERG Section 1.5.

Changes: Editorial.

PPHSR15-180