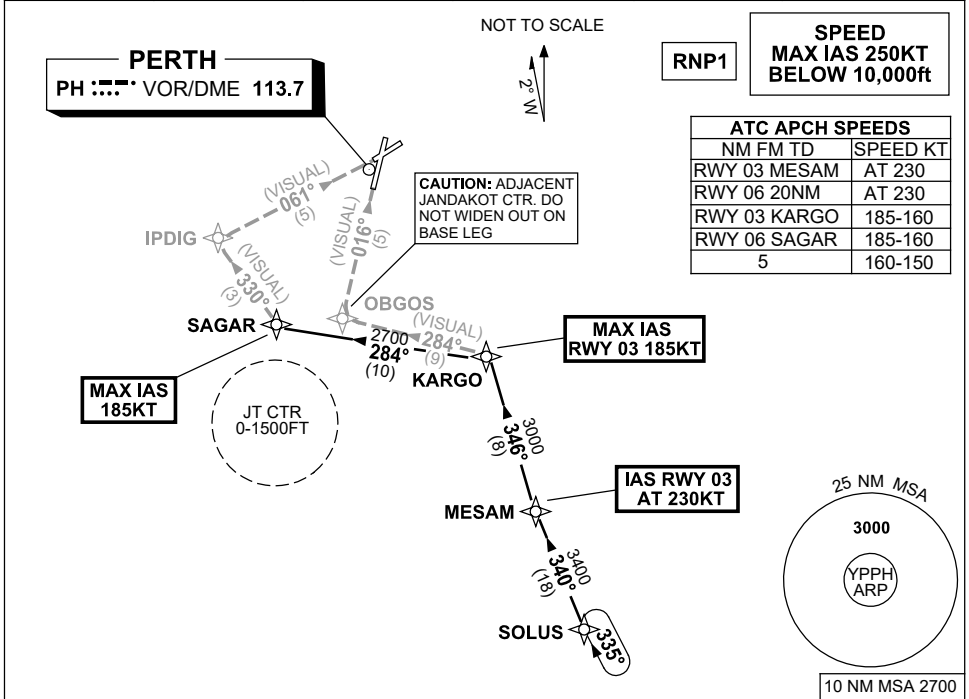


**STANDARD INSTRUMENT ARRIVAL (STAR)  
SOLUS THREE VICTOR ARRIVAL (RNAV)  
PERTH, WA (YPPH)**

**13 JUN 2024**

ATIS 113.7 123.8	APP 123.6	TWR 127.4	SMC E of RWY 03/21 122.2 W of RWY 03/21 121.7	Bearings are Magnetic Elevations in FEET AMSL
---------------------	--------------	--------------	---	--



- ARRIVAL:** **SOLUS THREE**
- From SOLUS, track 340° to MESAM, **IAS RWY 03 AT 230KT** from MESAM,
  - Turn **RIGHT**, track 346° to KARGO, **MAX IAS RWY 03 185KT** from KARGO.
- RWY 03 VICTOR:** • From KARGO turn **LEFT**, track 284° VISUAL to OBGOS for VISUAL final RWY 03
- RWY 06 VICTOR:** • From KARGO turn **LEFT**, track 284° to SAGAR  
MAX IAS 185KT from SAGAR  
• Turn **RIGHT**, track 330° VISUAL to IPDIG for VISUAL final RWY 06

**COMMUNICATIONS FAILURE: PROCEDURE IN IMC**

- Squawk 7600, comply with vertical navigation requirements, but not below MSA.
- Track via the latest STAR clearance to the nominated runway, then fly the most suitable approach in accordance with ERSA EMERG Section 1.5.