

**STANDARD INSTRUMENT ARRIVAL (STAR)
JULIM SIX VICTOR ARRIVALS (JET) (RNAV)
PERTH, WA (YPPH)**

5 SEP 2024

ATIS 113.7 123.8	APP 123.6 132.95	TWR 127.4	SMC E of RWY 03/21 122.2 W of RWY 03/21 121.7	Bearings are Magnetic Elevations in FEET AMSL
---------------------	---------------------	--------------	---	--

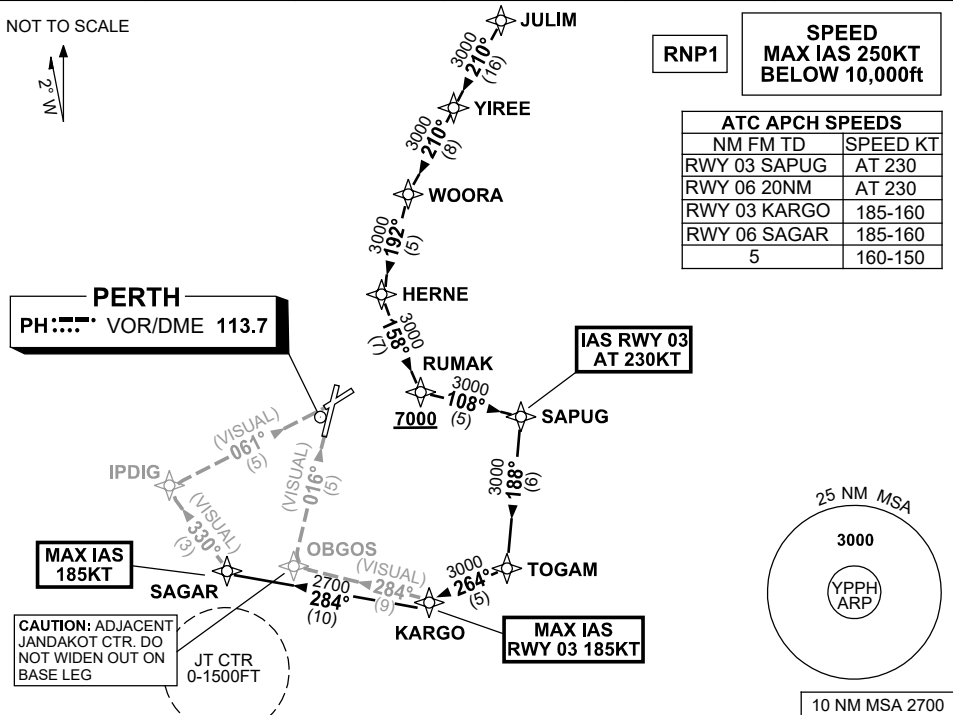
NOT TO SCALE



RNP1

**SPEED
MAX IAS 250KT
BELOW 10,000ft**

ATC APCH SPEEDS	
NM FM TD	SPEED KT
RWY 03 SAPUG	AT 230
RWY 06 20NM	AT 230
RWY 03 KARGO	185-160
RWY 06 SAGAR	185-160
5	160-150



ARRIVAL:

JULIM SIX

- From JULIM track 210° to YIREE,
- Track 210° to WOORA,
- Turn LEFT, track 192° to HERNE,
- Turn LEFT, track 158° to RUMAK,
Cross RUMAK AT or ABV 7000ft,
- Turn LEFT, track 108° to SAPUG,
IAS RWY 03 AT 230KT from SAPUG,
- Turn RIGHT, track 188° to TOGAM,
- Turn RIGHT, track 264° to KARGO,
MAX IAS RWY 03 185KT from KARGO.

RWY 03 VICTOR:

- From KARGO,
- Turn RIGHT, track 284° VISUAL to OBGOS for VISUAL final RWY 03

RWY 06 VICTOR:

- From KARGO turn RIGHT, track 284° to SAGAR
MAX IAS 185KT from SAGAR
- Turn RIGHT, track 330° VISUAL to IPDIG for VISUAL final RWY 06

COMMUNICATIONS FAILURE: PROCEDURE IN IMC

- Squawk 7600, comply with vertical navigation requirements, but not below MSA.
- Track via the latest STAR clearance to the nominated runway, then fly the most suitable approach in accordance with ERS A EMERG Section 1.5.

Changes: Editorial.

PPHSR12-180