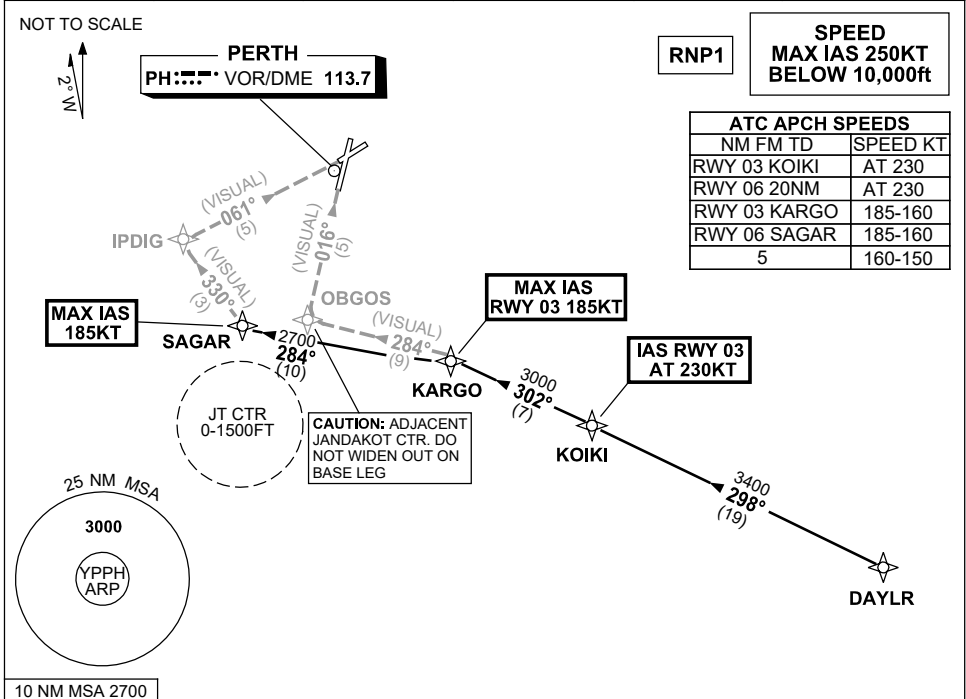


**STANDARD INSTRUMENT ARRIVAL (STAR)
DAYLR FIVE VICTOR ARRIVAL (NON-JET) (RNAV)
PERTH, WA (YPPH)**

13 JUN 2024

ATIS 113.7 123.8	APP 123.6	TWR 127.4	SMC E of RWY 03/21 122.2 W of RWY 03/21 121.7	Bearings are Magnetic Elevations in FEET AMSL
---------------------	--------------	--------------	---	--



ARRIVAL:

DAYLR FIVE

- From DAYLR, track 298° to KOIKI, IAS RWY 03 AT 230KT from KOIKI,
- Turn RIGHT, track 302° to KARGO, MAX IAS RWY 03 185KT from KARGO

RWY 03 VICTOR:

- From KARGO turn LEFT, track 284° VISUAL to OBGOS for VISUAL final RWY 03

RWY 06 VICTOR:

- From KARGO turn LEFT, track 284° to SAGAR MAX IAS 185KT from SAGAR
- Turn RIGHT, track 330° VISUAL to IPDIG for VISUAL final RWY 06

COMMUNICATIONS FAILURE: PROCEDURE IN IMC

- Squawk 7600, comply with vertical navigation requirements, but not below MSA.
- Track via the latest STAR clearance to the nominated runway, then fly the most suitable approach in accordance with ERSA EMERG Section 1.5.

Changes: VALIDITY NR, Editorial.

PPHSR07-179