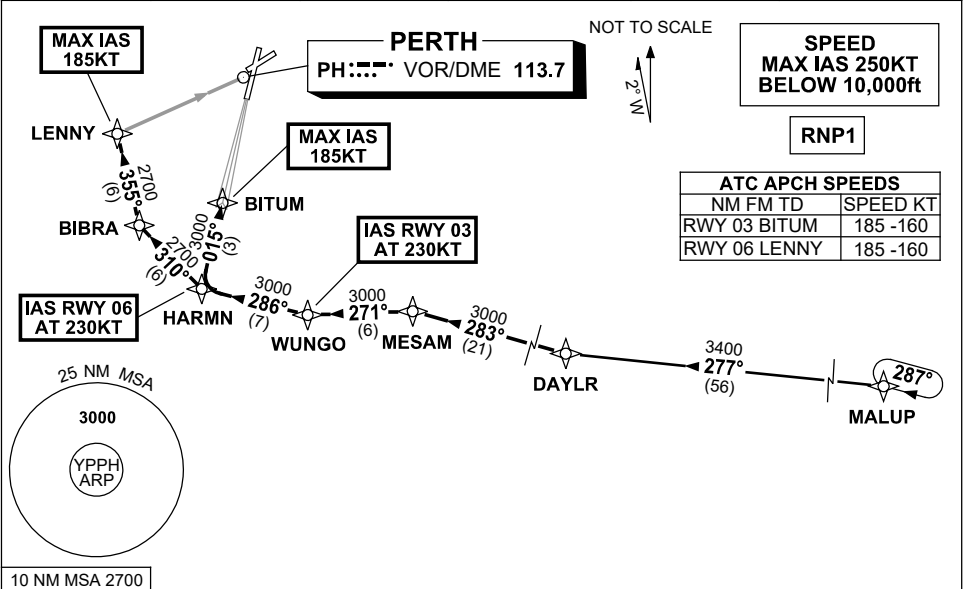


**STANDARD INSTRUMENT ARRIVAL (STAR)
DAYLR FIVE ALPHA ARRIVALS (NON-JET) (RNAV)
PERTH, WA (YPPH)**

13 JUN 2024

ATIS 113.7 123.8	APP 123.6	TWR 127.4	SMC E of RWY 03/21 122.2 W of RWY 03/21 121.7	Bearings are Magnetic Elevations in FEET AMSL
---------------------	--------------	--------------	---	--



TRANSITIONS:

MALUP: From MALUP to DAYLR,
Track 277° to DAYLR,
Then follow ARRIVAL instructions.

ARRIVAL: DAYLR FIVE

RWY 03 ALPHA: From DAYLR, track 283° to MESAM,
 • Turn LEFT, track 271° to WUNGO,
IAS AT 230KT from WUNGO,
 • Turn RIGHT, track 286° to HARMN,
 • Turn RIGHT, track 015° to BITUM,
 for ILS, RNP Z or LOC RWY 03 APPROACH.
MAX IAS 185KT from BITUM.

RWY 06 ALPHA: From DAYLR, track 283° to MESAM,
 • Turn LEFT, track 271° to WUNGO,
 • Turn RIGHT, track 286° to HARMN,
IAS AT 230KT from HARMN,
 • Turn RIGHT, track 310° to BIBRA,
 • Turn RIGHT, track 355° to LENNY,
 for RNP or VOR RWY 06 APPROACH.
MAX IAS 185KT from LENNY.

COMMUNICATIONS FAILURE: PROCEDURE IN IMC

- Squawk 7600, comply with vertical navigation requirements, but not below MSA.
- Track via the latest STAR clearance to the nominated runway, then fly the most suitable approach in accordance with ERS A EMERG Section 1.5.

Changes: BITUM REPLACES TIMMY, MALUP REPLACES HAMTN, VALIDITY INDICATOR.

PPHSR02-179