

**STANDARD INSTRUMENT ARRIVAL (STAR)  
LAVEX ONE ALPHA ARRIVALS (NON-JET) (RNAV) RWY 03/06  
PERTH, WA (YPPH)**

**5 SEP 2024**

ATIS 113.7 123.8	APP 123.6	TWR 127.4	SMC E of RWY 03/21 122.2 W of RWY 03/21 121.7	Bearings are Magnetic Elevations in FEET AMSL
---------------------	--------------	--------------	---	--

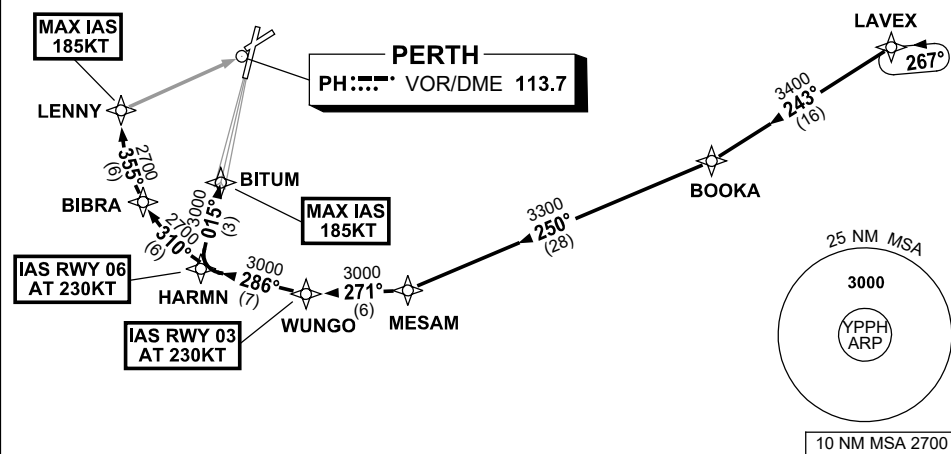
NOT TO SCALE



ATC APCH SPEEDS	
NM FM TD	SPEED KT
RWY 03 BITUM	185 -160
RWY 06 LENNY	185 -160

**SPEED  
MAX IAS 250KT  
BELOW 10,000ft**

**RNP1**



**ARRIVAL: LAVEX ONE**

**RWY 03 ALPHA:**

- From LAVEX, track 243° to BOOKA,
- Turn RIGHT, track 250° to MESAM,
- Turn RIGHT, track 271° to WUNGO,  
**IAS AT 230KT** from WUNGO,
- Turn RIGHT, track 286° to HARMN,
- Turn RIGHT, track 015° to BITUM,  
for ILS, RNP Z or  
LOC RWY 03 APPROACH,  
**MAX IAS 185KT** from BITUM.

**RWY 06 ALPHA:**

- From LAVEX, track 243° to BOOKA,
- Turn RIGHT, track 250° to MESAM,
- Turn RIGHT, track 271° to WUNGO,
- Turn RIGHT, track 286° to HARMN,  
**IAS AT 230KT** from HARMN,
- Turn RIGHT, track 310° to BIBRA,
- Turn RIGHT, track 355° to LENNY,  
for RNP or  
VOR RWY 06 APPROACH,  
**MAX IAS 185KT** from LENNY.

**COMMUNICATIONS FAILURE: PROCEDURE IN IMC**

- Squawk 7600, comply with vertical navigation requirements, but not below MSA.
- Track via the latest STAR clearance to the nominated runway, then fly the most suitable approach in accordance with ERSA EMERG Section 1.5.

Changes: Editorial.

PPHSR01-180