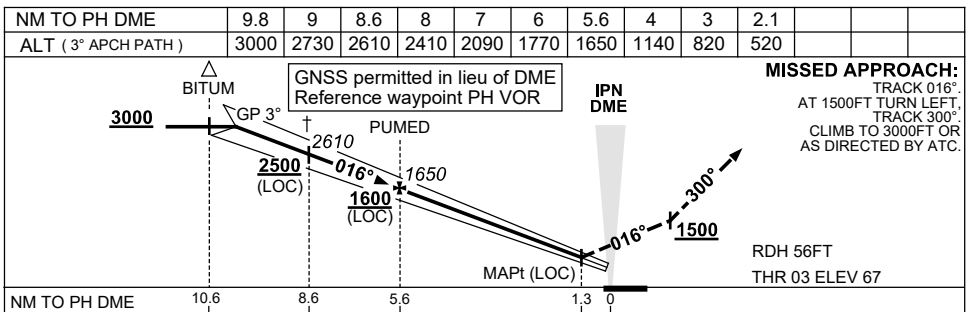
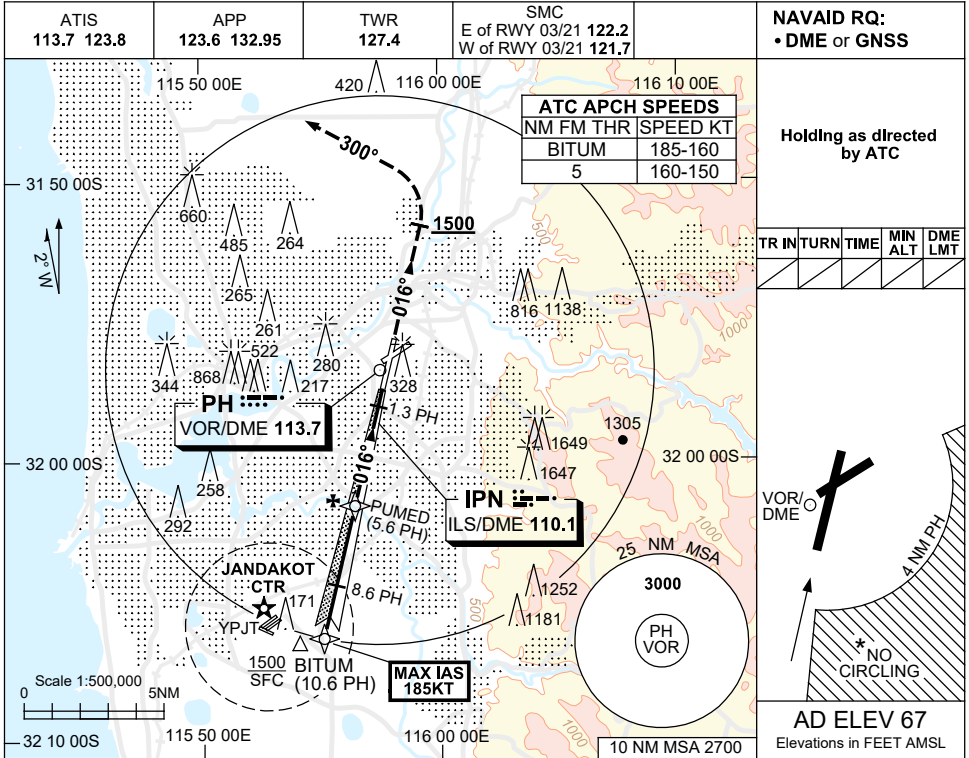


USE QNH

ILS-Y or LOC-Y RWY 03
PERTH, WA (YPPH)

13 JUN 2024



NM TO PH DME	10.6	8.6	5.6	1.3	0
NM TO THR 03		7.8	4.8	0.5	0

CATEGORY	A	B	C	D
S-I ILS		270 (203) 0.8	550 RVR	
S-I LOC		520 (453-1.7)		
CIRCLING *	760 (693-2.4)	1440 (1373-4.0)	1440 (1373-5.0)	
ALTERNATE ‡	(1193-4.4)	(1873-6.0)	(1873-7.0)	

- NOTES**
1. MAX IAS:
BITUM : 185KT.
 - *2. NO CIRCLING CAT C&D
ACFT BEYOND 4NM
PH E OF RWY 03/21
AND 06/24.
 - †3. ACFT MAY BE RADAR
VECTORED TO FNA.
 - *4. SPECIAL ALTN MNM
700/2.5KM.
 5. COLOUR: SEE
SPEC NOTICES.

Changes: BITUM REPLACES TIMMY.

PPII04-179