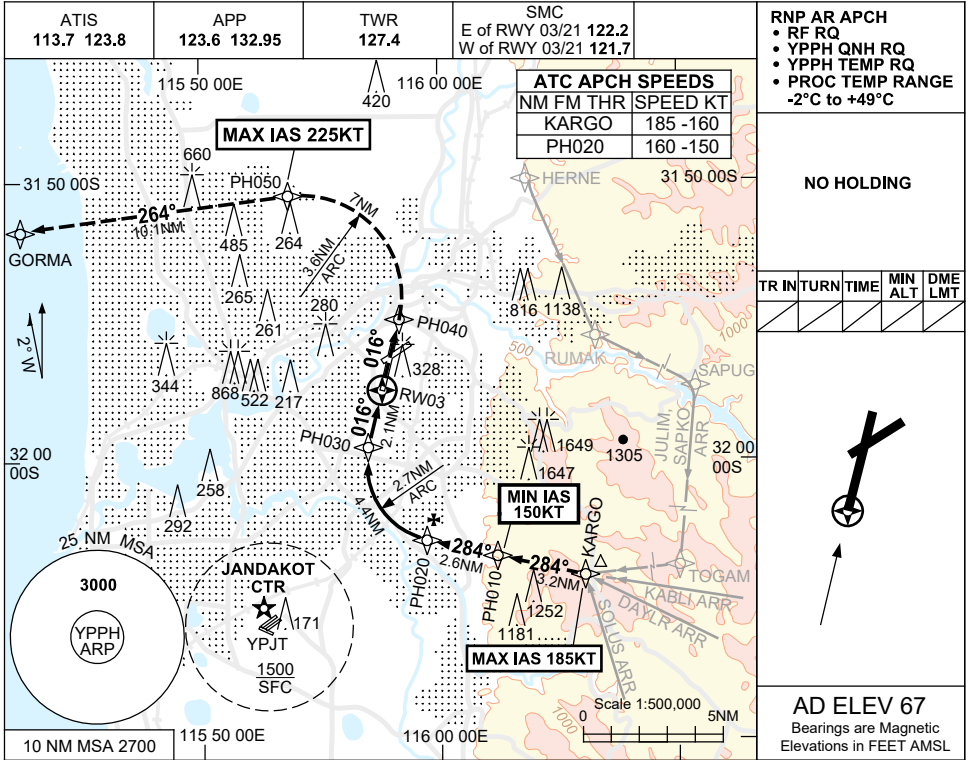


**FOR CASA APPROVED OPERATORS ONLY  
USE QNH**

**RNP X RWY 03 (AR)  
PERTH, WA (YPPH)**

**13 JUN 2024**



NM TO NEXT WPT	RW03	1	PH030	1	2	3	PH020	1	2	PH010		
ALT (3 APCH PATH)		450	790	1100	1420	1740	2180	2500	2810	3000		

**MISSED APPROACH:**  
TRACK 016° TO PH040, THEN TURN LEFT TO PH050, THEN TRACK 264° TO GORMA. CLIMB TO 3000FT OR AS DIRECTED BY ATC.

NM TO RW03	19.7	9.6	2.6	0	2.1	6.5	9.1	12.3
WPT	MAHF GORMA	PH050	PH040	MAPt RW03	PH030	FAF PH020	PH010	IF/AF KARGO
Altitude						2180	1900	3000
Angle		264°	016°	016°		284°	284°	3°

**NOTES**

1. MAX IAS:  
KARGO : 185KT.  
MISSED APCH  
TURN : 225KT.
2. MIN IAS:  
PH010 : 150KT.
3. RNP 0.3 FM KARGO.
4. COLOUR: SEE SPEC NOTICES.

CATEGORY	A	B	C	D
RNP 0.3		<b>450 (383-1.2)</b>		
CIRCLING	NOT AUTHORISED			
ALTERNATE	(1193-4.4)		(1873-6.0)	
				(1873-7.0)

Changes: KABL REPLACES BEVLY, Editorial.

PPHGN5-179