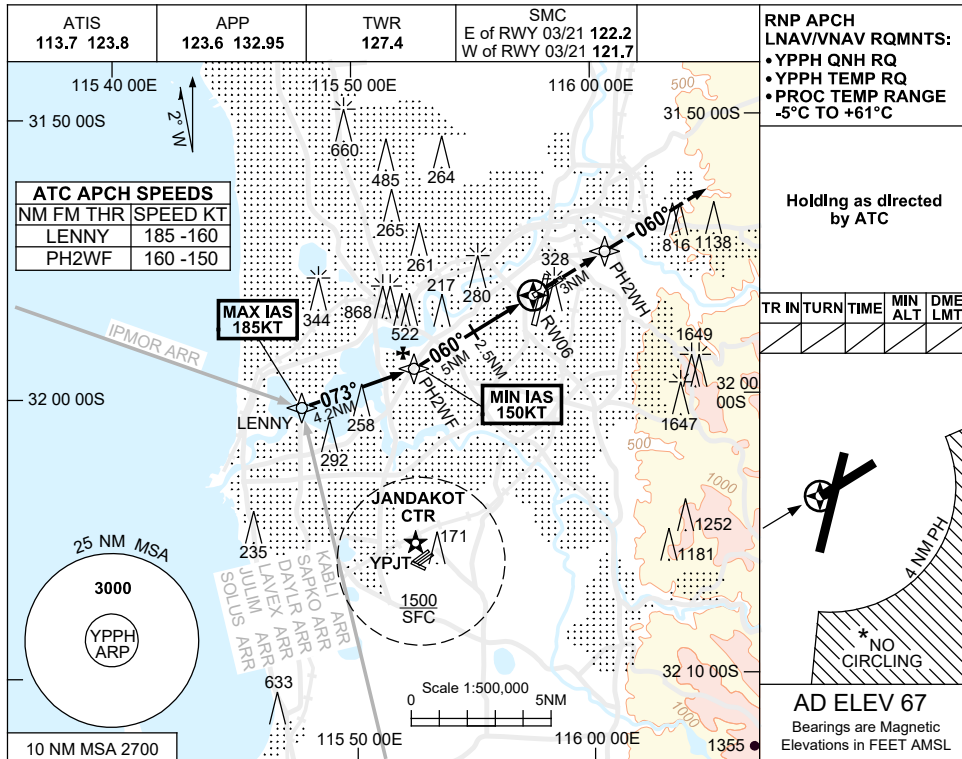


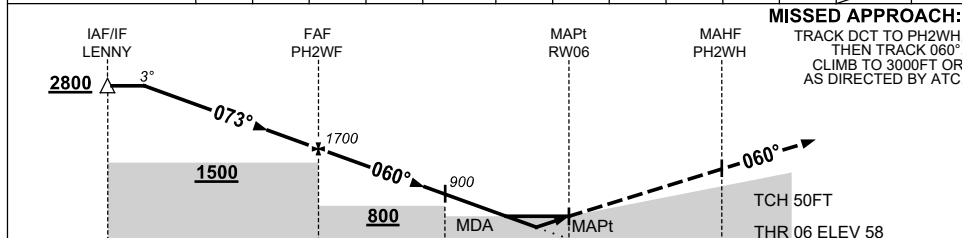
USE QNH

RNP RWY 06  
PERTH, WA (YPPH)

13 JUN 2024



NM TO NEXT WPT	3.5	3	2	1	PH2WF	4	3	2.5	2	1.3	1	RW06
ALT (3° APCH PATH)	2800	2660	2340	2020	1700	1380	1060	900	750	530	420	



CATEGORY	A	B	C	D
LNAV/VNAV		420 (362-2.0)		
LNAV		530 (472-2.7)		
CIRCLING *	760 (693-2.4)		1440 (1373-4.0)	1440 (1373-5.0)
ALTERNATE	(1193-4.4)		(1873-6.0)	(1873-7.0)

1. MAX IAS: LENNY : 185KT.  
 2. MIN IAS: PH2WF : 150KT.  
 \* 3. NO CIRCLING CAT C & D ACFT BEYOND 4NM PH E OF RWY 03/21 AND 06/24.  
 4. COLOUR: SEE SPEC NOTICES.

Changes: KABELI REPLACES BEVLY, LAVEX REPLACES GRENE. PPHGN03-179