

**STANDARD INSTRUMENT DEPARTURES (SID)
LENVU ONE, PUMRY SEVEN (NON-JET) (RNAV)
PERTH, WA (YPPH)**

5 SEP 2024

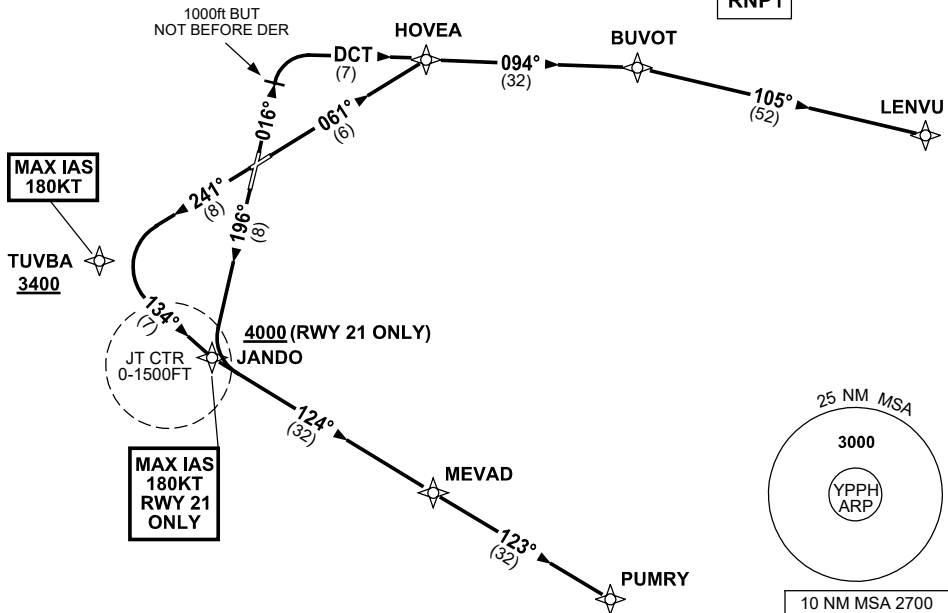
ATIS 113.7 123.8	ACD 118.55	SMC E of RWY 03/21 122.2 W of RWY 03/21 121.7	TWR 127.4	DEP 118.7	Bearings are Magnetic Elevations in FEET AMSL
---------------------	---------------	-----------------------------------------------------	--------------	--------------	--------------------------------------------------

NOT TO SCALE



SPEED
MAX IAS 250KT
BELOW 10,000ft
NON-JET BLW 28,000KG
TO 4000ft MAX 150KT
4000ft TO 10,000ft MAX 180KT

RNP1



LENVU ONE DEPARTURE (NON-JET)

- RWY 03**
- GRAD 4.0% to 2800ft THEN 3.3%
 - Track 016°
 - AT 1000ft but not before DER
Turn RIGHT, track DCT to HOVEA
 - Track 094° to BUVOT
 - Turn RIGHT, track 105° to LENVU, then as cleared
- RWY 06**
- GRAD 4.0% to 2800ft THEN 3.3%
 - Track 061° to HOVEA
 - Turn RIGHT, track 094° to BUVOT
 - Turn RIGHT, track 105° to LENVU, then as cleared

PUMRY SEVEN DEPARTURE (NON-JET)

- RWY 21**
- GRAD 4.0% to 2800ft THEN 3.3% (7.9% to 4000ft)
MAX IAS 180KT until JANDO
 - Track 196° to JANDO
Cross JANDO AT or ABV 4000ft
 - Turn LEFT, track 124° to MEVAD
 - Track 123° to PUMRY, then as cleared
- RWY 24**
- GRAD 4.0% to 2800ft THEN 3.3% (6.6% to 3400ft)
MAX IAS 180KT until TUVBA
 - Track 241° to TUVBA
Cross TUVBA AT or ABV 3400ft
 - Turn LEFT, track 134° to JANDO
 - Track 124° to MEVAD
 - Track 123° to PUMRY, then as cleared

Changes: Editorial.

PPHDP07-180