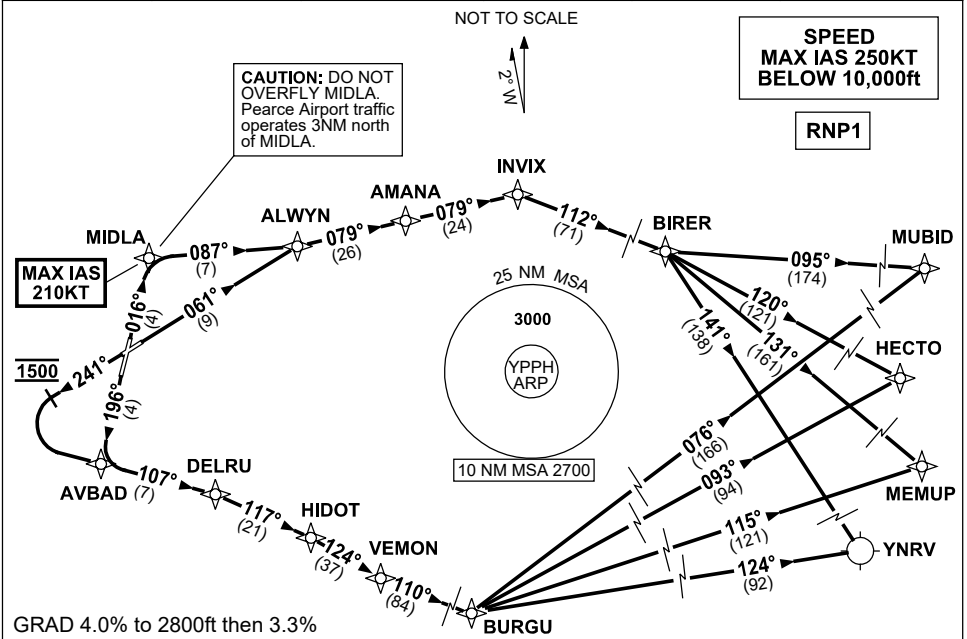


**STANDARD INSTRUMENT DEPARTURES (SID)  
HECTO FIVE, MEMUP FIVE, MUBID FOUR, YNRV FIVE (JET) (RNAV)  
PERTH, WA (YPPH)**

5 SEP 2024

ATIS 113.7 123.8	ACD 118.55	SMC E of RWY 03/21 122.2 W of RWY 03/21 121.7	TWR 127.4	DEP 118.7	Bearings are Magnetic Elevations in FEET AMSL
---------------------	---------------	---	--------------	--------------	--



<p><b>MUBID</b> FOUR DEPARTURE</p> <p><b>HECTO</b> FIVE DEPARTURE</p> <p><b>MEMUP</b> FIVE DEPARTURE</p> <p><b>RAVENSTHORPE (YNRV) FIVE DEPARTURE</b></p> <p><b>RWY 03</b></p> <p><b>MAX IAS 210KT</b> until MIDLA</p> <ul style="list-style-type: none"> <li>Track 016° to MIDLA</li> <li>Turn RIGHT, track 087° to ALWYN</li> </ul> <p><b>RWY 06</b></p> <ul style="list-style-type: none"> <li>Track 061° to ALWYN</li> </ul> <p><b>From ALWYN</b></p> <ul style="list-style-type: none"> <li>Track 079° to AMANA</li> <li>Track 079° to INVIX</li> <li>Turn RIGHT, track 112° to BIRER</li> </ul> <p><b>From BIRER</b></p> <p>For MUBID</p> <ul style="list-style-type: none"> <li>Turn LEFT, track 095° to MUBID, then as cleared</li> </ul> <p>For HECTO</p> <ul style="list-style-type: none"> <li>Turn RIGHT, track 120° to HECTO, then as cleared</li> </ul> <p>For MEMUP</p> <ul style="list-style-type: none"> <li>Turn RIGHT, track 131° to MEMUP, then as cleared</li> </ul> <p>For YNRV</p> <ul style="list-style-type: none"> <li>Turn RIGHT, track 141° to YNRV</li> </ul>	<p><b>RWY 21</b></p> <ul style="list-style-type: none"> <li>Track 196° to AVBAD</li> <li>Turn LEFT, track 107° to DELRU</li> </ul> <p><b>RWY 24</b></p> <ul style="list-style-type: none"> <li>Track 241°</li> <li>AT 1500ft turn LEFT</li> <li>Track DCT to AVBAD</li> <li>Track 107° to DELRU</li> </ul> <p><b>From DELRU</b></p> <ul style="list-style-type: none"> <li>Turn RIGHT, track 117° to HIDOT</li> <li>Turn RIGHT, track 124° to VEMON</li> <li>Turn LEFT, track 110° to BURGU</li> </ul> <p><b>From BURGU</b></p> <p>For MUBID</p> <ul style="list-style-type: none"> <li>Turn LEFT, track 076° to MUBID, then as cleared</li> </ul> <p>For HECTO</p> <ul style="list-style-type: none"> <li>Turn LEFT, track 093° to HECTO, then as cleared</li> </ul> <p>For MEMUP</p> <ul style="list-style-type: none"> <li>Turn RIGHT, track 115° to MEMUP, then as cleared</li> </ul> <p>For YNRV</p> <ul style="list-style-type: none"> <li>Turn RIGHT, track 124° to YNRV</li> </ul>
--	--

Changes: Editorial.

PPHP04-180