

**STANDARD INSTRUMENT DEPARTURES (SID)
AMANA FIVE (JET) (RNAV)
PERTH, WA (YPPH)**

13 JUN 2024

ATIS 113.7 123.8	ACD 118.55	SMC E of RWY 03/21 122.2 W of RWY 03/21 121.7	TWR 127.4	DEP 118.7	Bearings are Magnetic Elevations in FEET AMSL
---------------------	---------------	---	--------------	--------------	--

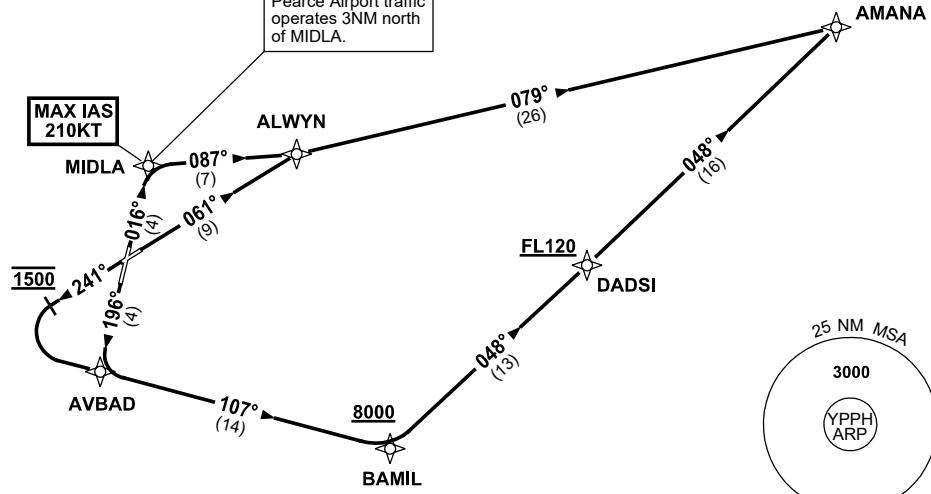
NOT TO SCALE



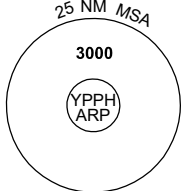
**SPEED
MAX IAS 250KT
BELOW 10,000ft**

RNP1

**CAUTION: DO NOT
OVERFLY MIDLA.**
Pearce Airport traffic
operates 3NM north
of MIDLA.



GRAD 4.0% to 2800ft THEN 3.3%



10 NM MSA 2700

AMANA FIVE DEPARTURE (JET)

RWY 03

- **MAX IAS 210KT** until MIDLA
- Track 016° to MIDLA,
- Turn RIGHT, track 087° to ALWYN,
- Turn LEFT, track 079° to AMANA, then as cleared

RWY 06

- Track 061° to ALWYN,
- Turn RIGHT, track 079° to AMANA, then as cleared

RWY 21

- Track 196° to AVBAD

RWY 24

- Track 241°
- AT 1500ft turn LEFT,
- Track DCT to AVBAD

From AVBAD

- Track 107° to BAMIL
Cross BAMIL AT or ABV 8000ft
- Turn LEFT, track 048° to DADSI,
Cross DADSI AT or ABV FL120,
- Track 048° to AMANA, then as cleared

Changes: DADSI REPLACES HELNA, VALIDITY INDICATOR.

PPHDP03-179