

**STANDARD INSTRUMENT DEPARTURES (SID)  
PERTH SEVEN DEPARTURE (RADAR)  
PERTH, WA (YPPH)**

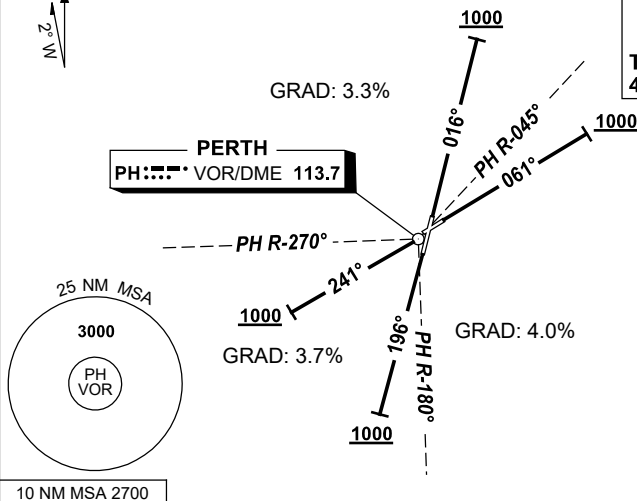
**7 SEP 2023**

ATIS 113.7 123.8	ACD 118.55	SMC E of RWY 03/21 122.2 W of RWY 03/21 121.7	TWR 127.4	DEP 118.7	Bearings are Magnetic Elevations in FEET AMSL
---------------------	---------------	---	--------------	--------------	--

NOT TO SCALE



**SPEED**  
**MAX IAS 250KT**  
**BELOW 10,000ft**  
**NON-JET BLW 28,000KG**  
**TO 4000ft 140-150KT**  
**4000ft TO 10,000ft 170-180KT**



**PERTH SEVEN DEPARTURE (RADAR)**

**RWY 03**

- Track 016°
- AT 1000ft but not before DER turn to Assigned Heading or track
- Contact Departures for Radar Vectors

**RWY 06**

- Track 061°
- AT 1000ft but not before DER turn to Assigned Heading or track
- Contact Departures for Radar Vectors

**RWY 21**

- Track 196°
- AT 1000ft but not before DER turn to Assigned Heading or track
- Contact Departures for Radar Vectors

**RWY 24**

- Track 241°
- AT 1000ft but not before DER turn to Assigned Heading or track
- Contact Departures for Radar Vectors

**COMMUNICATIONS FAILURE : PROCEDURE IN IMC**

On recognition of communication failure.

- Squawk 7600.
- Maintain last assigned vector for 2 minutes, and
- CLIMB IF NECESSARY TO MINIMUM SAFE ALTITUDE, to maintain terrain clearance, then
- Proceed in accordance with the latest ATC route clearance acknowledged.

Changes: RWY 06/24 INITIAL TRACKS.

PPHPD01-176