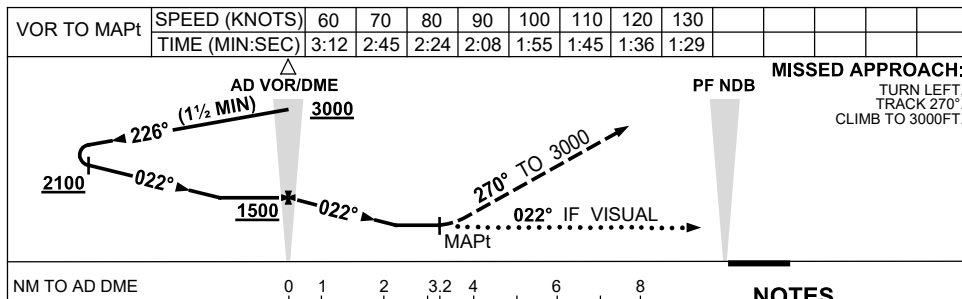
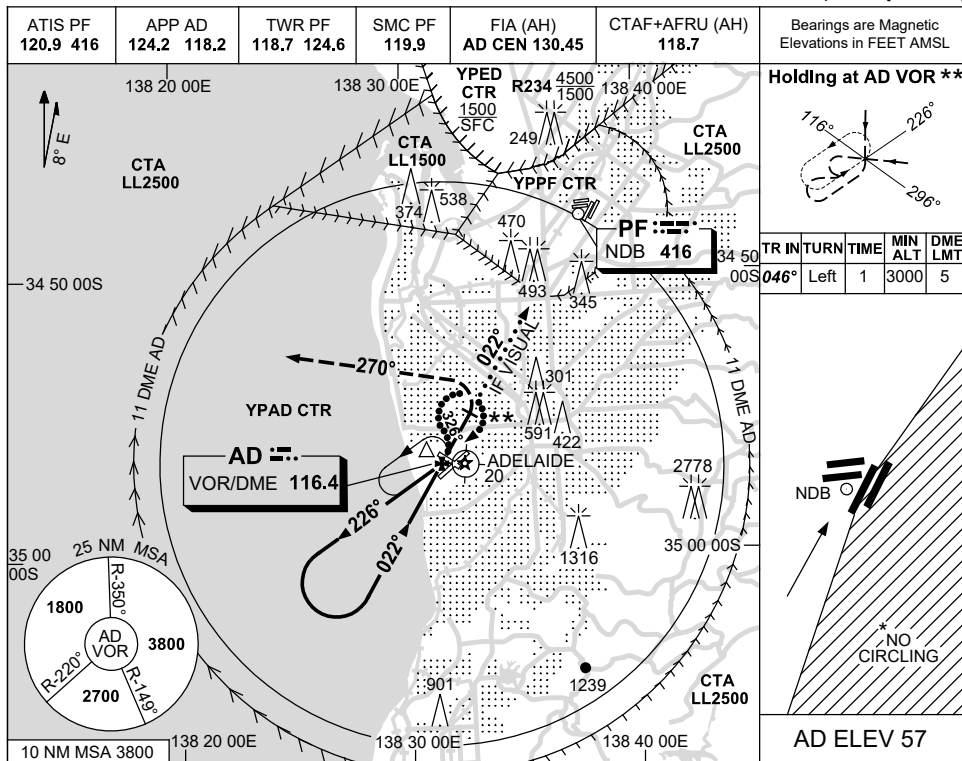


USE QNH

VOR-A

2 DEC 2021

ADELAIDE/PARAFIELD, SA (YPPF)



NM TO AD DME	0	1	2	3.2	4	6	8
NM TO PF NDB	10			7.3	5		

NOTES

1. MAX IAS:
APPROACH: 140KT.
HOLDING : 150KT.
2. ACFT MAY BE RADAR VECTORED TO INTERCEPT FINAL APPROACH AT VOR, 1500FT.
- * 3. NO CIRCLING EAST OF RWY 03L/21R.
4. PROC NOT AVBL FOR TRAINING.
- **5. PROC TURN (80°/260°) REQD TO JOIN PROC FROM HOLD.

CATEGORY	A	B	C	D
CIRCLING *	1120 (1063-2.4)		NOT APPLICABLE	
ALTERNATE	(1563-4.4)			

Changes: PROFILE VIEW DIST.

PPFV001-169