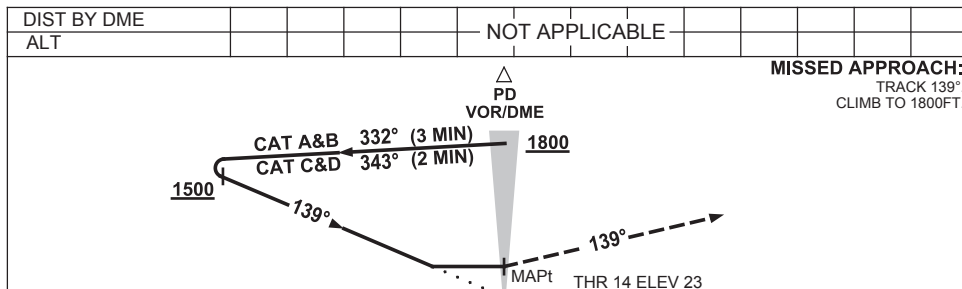
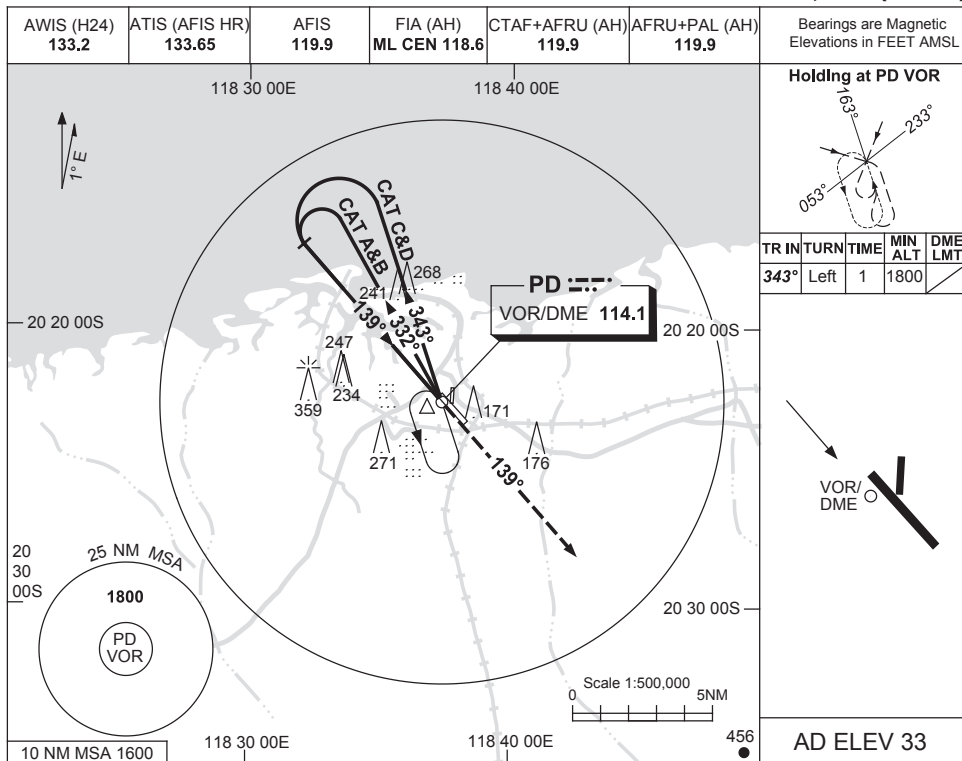


USE QNH

VOR-Y RWY 14

15 AUG 2019

PORT HEDLAND, WA (YPPD)



NM TO PD DME

CATEGORY	A	B	C	D
S-I VOR	720 (697-4.0)			
CIRCLING	720 (687-2.4)	820 (787-4.0)	860 (827-5.0)	
ALTERNATE	(1187-4.4)	(1287-6.0)	(1327-7.0)	

- NOTES**
- MAX IAS:
HOLDING: 210KT.
INITIAL : 210KT.

Changes: COORD FORMAT, Editorial.

PPDVO01-160