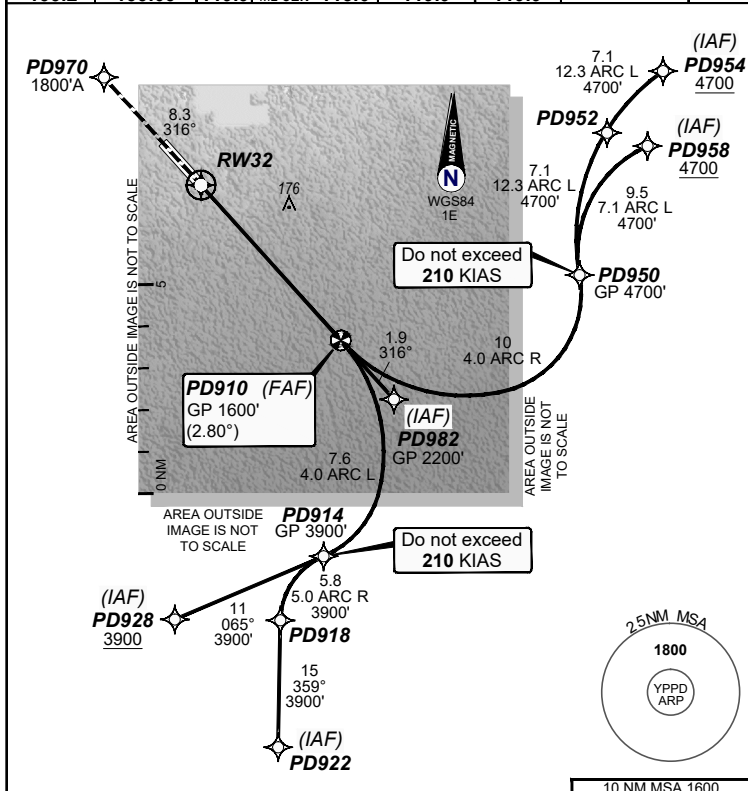


**FOR CASA APPROVED  
OPERATORS ONLY  
USE QNH**

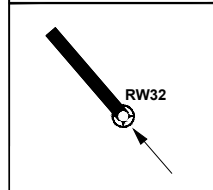
**RNP U RWY 32 (AR)  
PORT HEDLAND, WA (YPPD)**

**30 NOV 2023**

AWIS (H24) <b>133.2</b>	ATIS (AFIS HR) <b>133.65</b>	AFIS <b>119.9</b>	FIA (AH) ML CEN <b>118.6</b>	CTAF+AFRU (AH) <b>119.9</b>	AFRU+PAL (AH) <b>119.9</b>	RNV U 32 <b>THR ELEV 33</b>	RNP AR APCH • RF RQ • YPPD ACT QNH RQ • YPPD ACT TEMP RQ • PROC TEMP RANGE +6°C TO +47°C
----------------------------	---------------------------------	----------------------	---------------------------------	--------------------------------	-------------------------------	--------------------------------	---

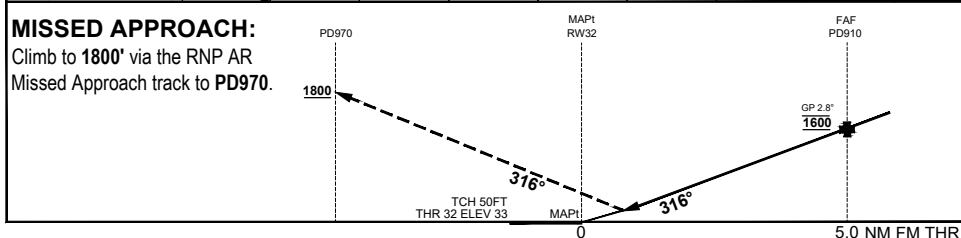


TR	IN	TURN	TIME	MIN	DME
				ALT	LMT



**AD ELEV 33**  
Bearings are Magnetic  
Elevations in FEET AMSL

	RW32	0.9	PD910					
<b>ALT (2.8° APCH PATH)</b>		341	1600					



**NOTES**  
1. APCH PATH DOES NOT COINCIDE WITH PAPI 3° GLIDE PATH.

CATEGORY	A	B	C	D
RNP (0.30)			DA(H) 341 (308 - 1.7)	
CIRCLING	N/A		NOT AUTHORISED	
ALTERNATE				

**DO NOT USE FOR NAVIGATION**

