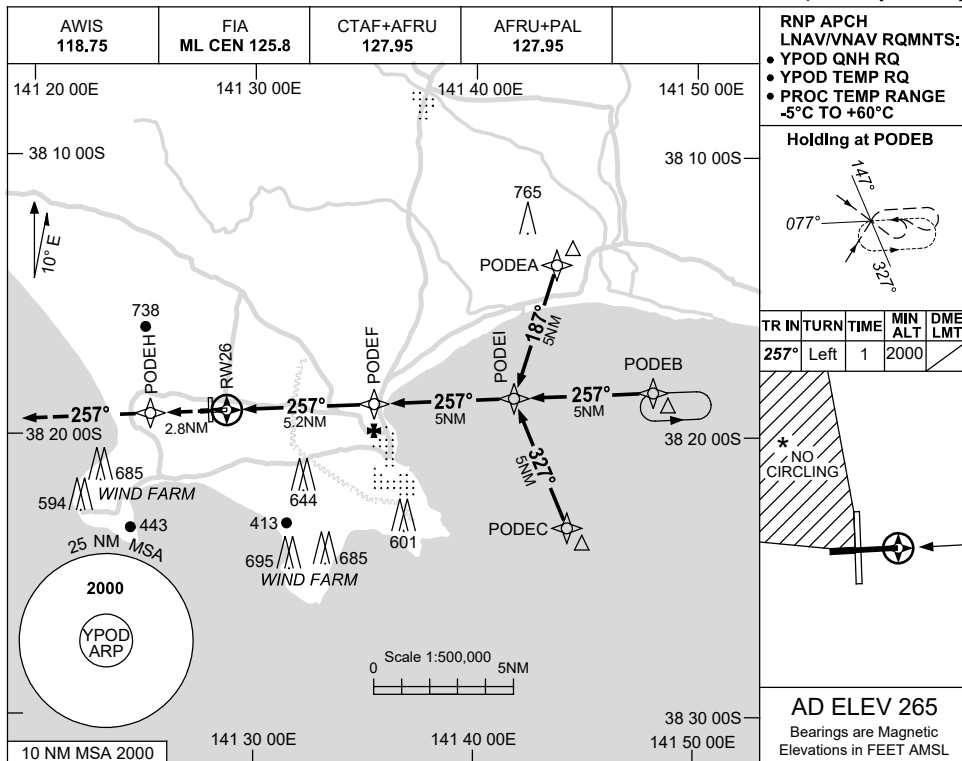


USE QNH

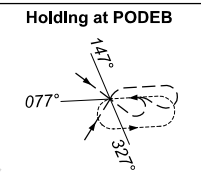
RNP RWY 26

PORTLAND, VIC (YPOD)

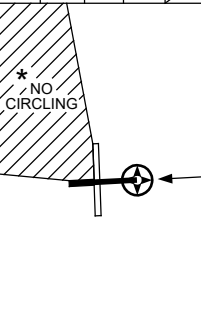
15 JUN 2023



RNP APCH  
LNAV/VNAV RQMNTS:  
• YPOD QNH RQ  
• YPOD TEMP RQ  
• PROC TEMP RANGE  
-5°C TO +60°C

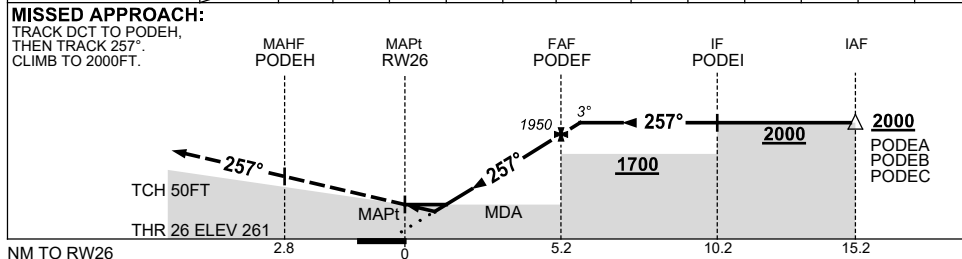


TR	IN	TURN	TIME	MIN ALT	DME LMT
257°	Left	1	2000		



AD ELEV 265  
Bearings are Magnetic  
Elevations in FEET AMSL

NM TO NEXT WPT	RW26	1	1.6	2	3	4	PODEF	0.1				
ALT (3° APCH PATH)		620	810	950	1270	1580	1950	2000				



NOTES

CATEGORY	A	B	C	D
LNAV/VNAV	620 (359-2.0)			NOT APPLICABLE
LNAV	810 (545-3.1)			
CIRCLING *	940 (675-2.4)		1180 (915-4.0)	
ALTERNATE	(1175-4.4)		(1415-6.0)	

- MAX IAS:  
INITIAL : 210KT.
- \* NO CIRCLING IN  
SECTOR NW OF  
RWY 08/26 AND  
RWY 17/35.

Changes: CHART TITLE, PBN SPECIFICATION BOX, Editorial.

PODGN02-175