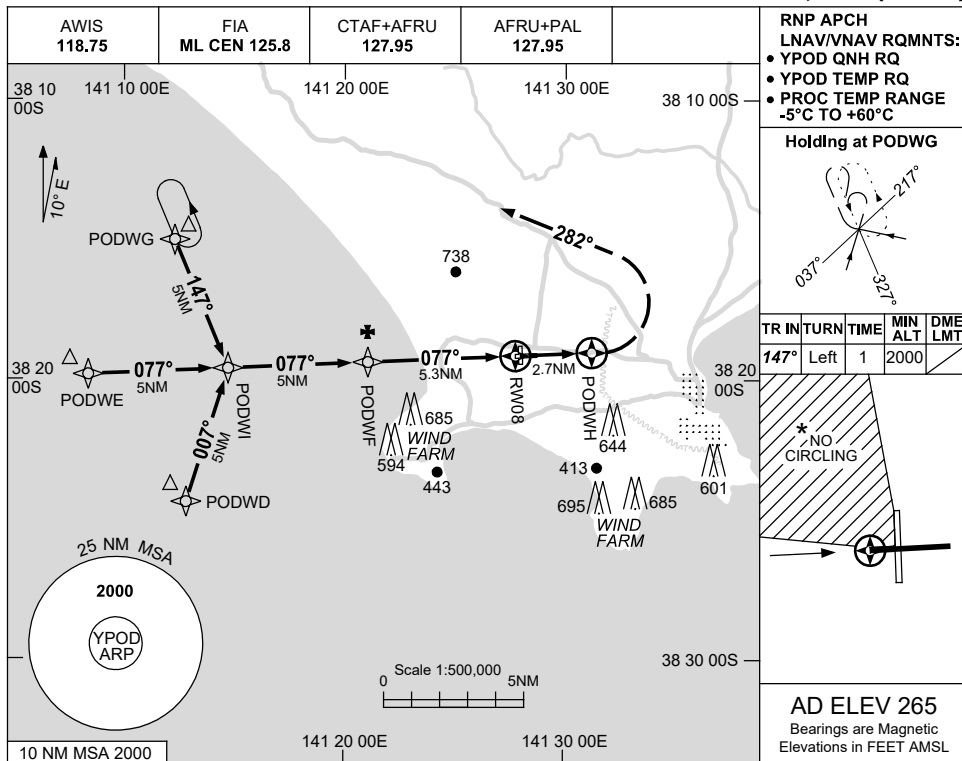


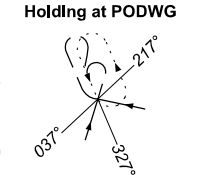
USE QNH

RNP RWY 08
PORTLAND, VIC (YPOD)

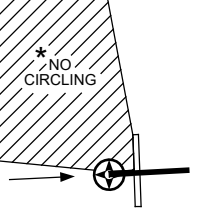
15 JUN 2023



RNP APCH
 LNAV/VNAV RQMNTS:
 • YPOD QNH RQ
 • YPOD TEMP RQ
 • PROC TEMP RANGE
 -5°C TO +60°C

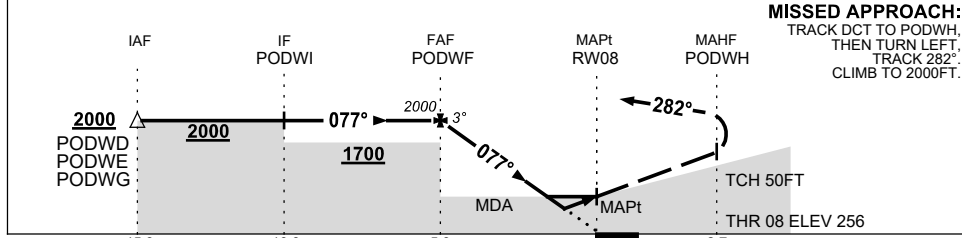


TR	IN	TURN	TIME	MIN ALT	DME LMT
147°	Left	1	2000		



AD ELEV 265
 Bearings are Magnetic
 Elevations in FEET AMSL

NM TO NEXT WPT	PODWF	4	3	2	1.4	RW08
ALT (3° APCH PATH)	2000	1580	1260	940	750	



MISSED APPROACH:
 TRACK DCT TO PODWH,
 THEN TURN LEFT,
 TRACK 282°,
 CLIMB TO 2000FT.

NOTES

CATEGORY	A	B	C	D
LNAV/VNAV	750 (494-2.8)			NOT APPLICABLE
LNAV	940 (684-3.9)			
CIRCLING *	940 (675-2.4)		1180 (915-4.0)	
ALTERNATE	(1175-4.4)		(1415-6.0)	

- MAX IAS:
INITIAL : 210KT.
- * 2. NO CIRCLING IN SECTOR NW OF RWY 08/26 AND RWY 17/35.

Changes: CHART TITLE, PBN SPECIFICATION BOX, Editorial. PODGN01-175