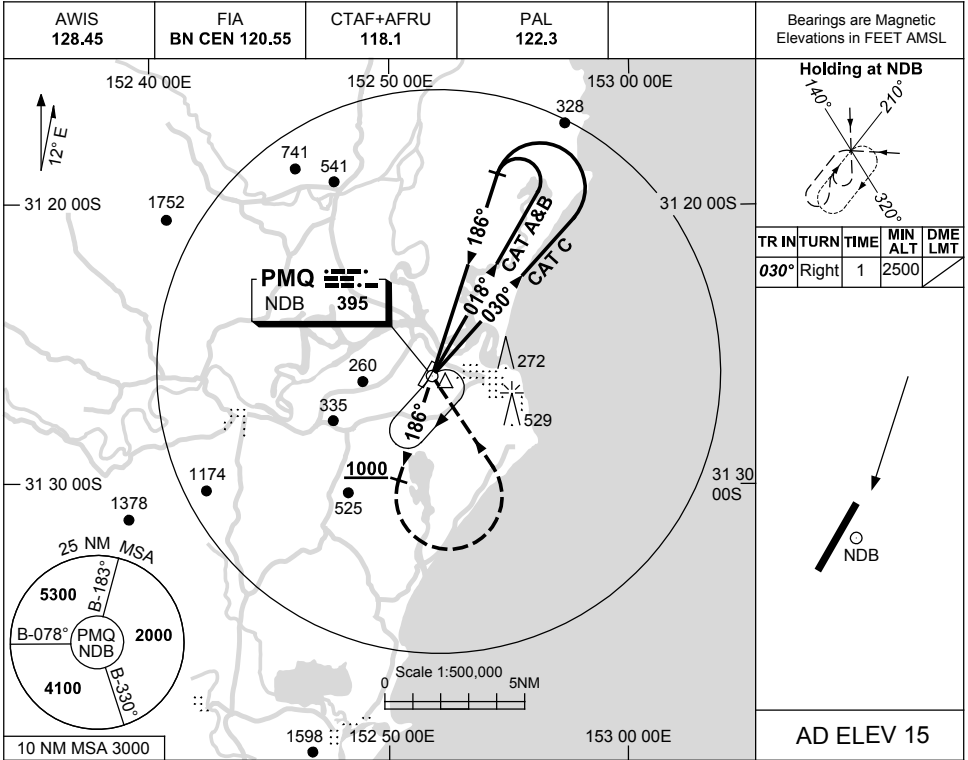


USE QNH

NDB-A

30 NOV 2023

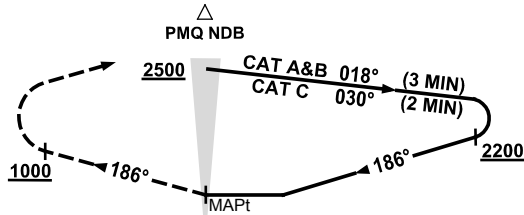
PORT MACQUARIE, NSW (YPMQ)



| | | | | |
|----------|----------------|--|--|--|
| DME DIST | NOT APPLICABLE | | | |
| ALT | | | | |

MISSED APPROACH:

TRACK 186°
AT OR ABV 1000FT TURN LEFT,
TRACK DCT TO PMQ NDB.
CLIMB TO 2000FT.



NOTES

1. MAX IAS:
INITIAL : 210KT.

| CATEGORY | A | B | C | D |
|-----------|---------------|---|----------------|----------------|
| | | | | NOT APPLICABLE |
| CIRCLING | 850 (835-2.4) | | 1030(1015-4.0) | |
| ALTERNATE | (1335-4.4) | | (1515-6.0) | |

Changes: DELETED R574, Editorial.

PMQNB01-177