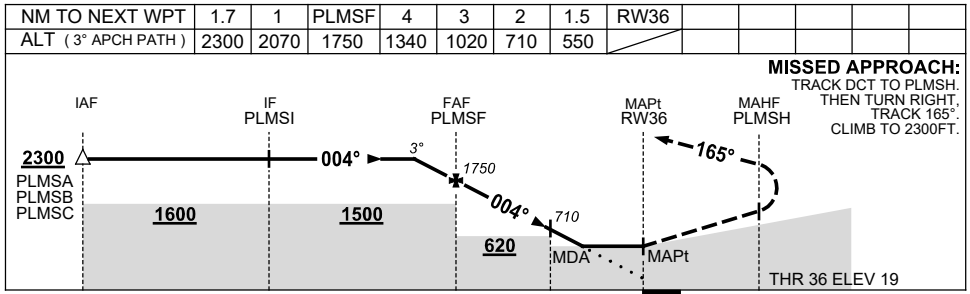
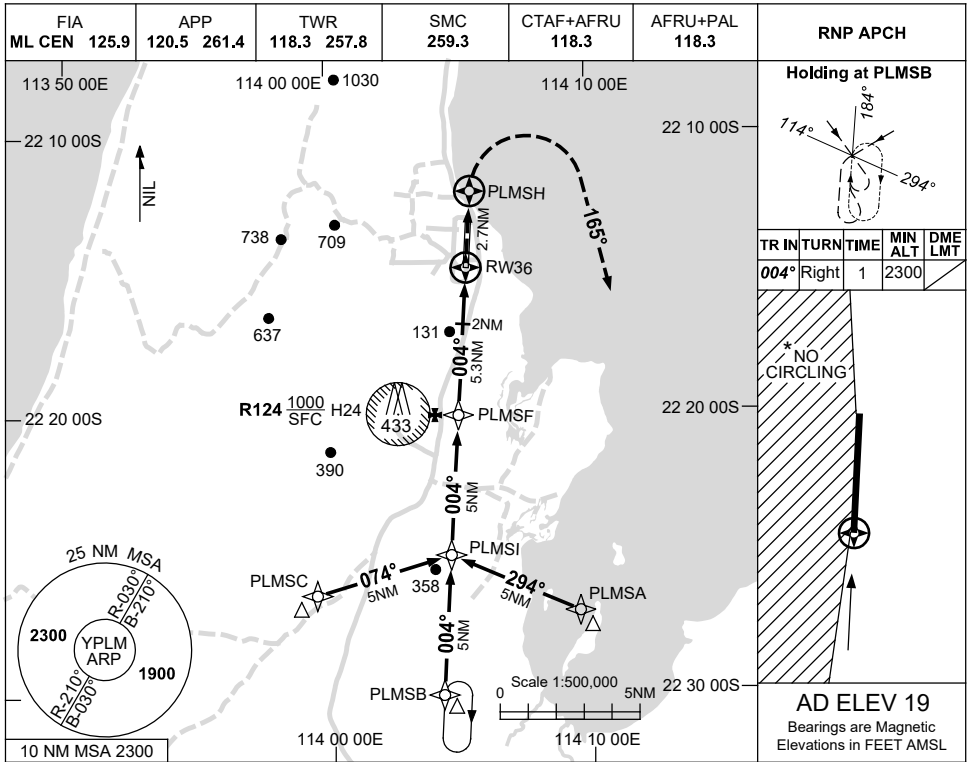


USE QNH

RNP RWY 36  
LEARMONTH, WA (YPLM)

30 NOV 2023



NOTES

| CATEGORY  | A             | B             | C             | D |
|-----------|---------------|---------------|---------------|---|
| LNAV      | 550 (531-3.0) |               |               |   |
| CIRCLING* | 660 (641-2.4) | 760 (741-4.0) | 810 (791-5.0) |   |
| ALTERNATE | (1141-4.4)    | (1241-6.0)    | (1291-7.0)    |   |

- MAX IAS: INITIAL : 210KT.
- NO CIRCLING WEST OF RWY 18/36.
- AWIS (PHONE) 08 6216 2623

Changes: CHART TITLE, PBN SPECIFICATION BOX, Editorial.

PLMGN02-177